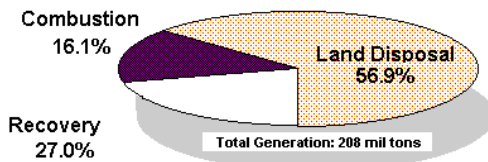


Management of MSW in the U.S., 1995

Source: Characterization of MSW in the US: 1996 Update, US EPA, Washington, DC

WASTE MANAGEMENT PRACTICES, 1960-2000
(in pounds per person per day)

	1960	1970	1980	1990	1995	2000
Generation	2.68	3.25	3.66	4.33	4.34	4.42
Recovery for recycling/composting	0.17	0.22	0.35	0.74	1.17	1.33
Discards after recovery	2.51	3.04	3.31	3.59	3.17	3.09
Combustion	0.82	0.67	0.33	0.70	0.70	0.72
Discards to landfill	1.69	2.36	2.98	2.89	2.47	2.38
Population (in millions)	180.0	204.0	227.3	249.4	262.8	274.6

Select Data View: [lbs/per/day] [tons/year] [% of generation]

Source: Characterization of MSW in the US: 1996 Update, US EPA, Washington, DC

WASTE MANAGEMENT PRACTICES, 1960-2000
(as a percent of generation)

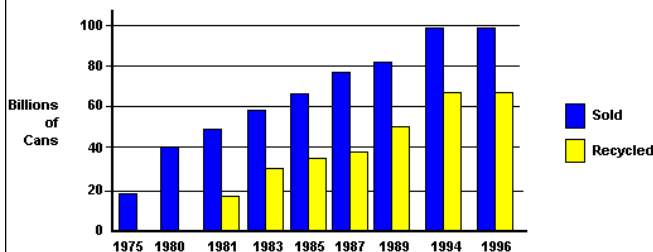
	1960	1970	1980	1990	1995	2000
Generation	100%	100%	100%	100%	100%	100%
Recovery for recycling/composting	6.4%	6.6%	9.6%	17.2%	27.0%	30%
Discards after recovery	93.6%	93.4%	90.4%	82.8%	73.0%	70%
Combustion	30.6%	20.7%	9.0%	16.2%	16.1%	16.2%
Discards to landfill	63.0%	72.6%	81.4%	66.7%	56.9%	53.7%

Select Data View: [lbs/per/day] [tons/year] [% of generation]

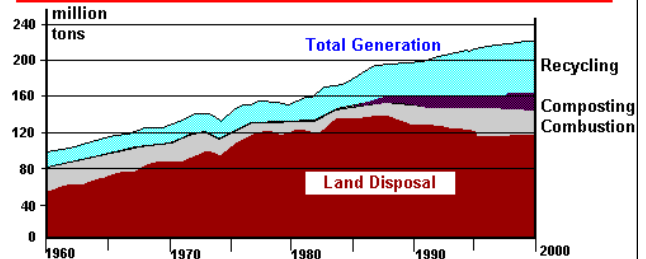
Source: Characterization of MSW in the US: 1996 Update, US EPA, Washington, DC

MAJOR TYPES OF PLASTICS BY S.P.I. CODES

SPI CODE	TYPE OF RESIN	EXAMPLE PRODUCTS	% OF PLASTIC
1	PET - Polyethylene terephthalate	Soft drink bottles, medicine containers	0.5%
2	HDPE - High-density polyethylene	Milk and water bottles, detergent bottles, toys	21%
3	PVC - Polyvinyl Chloride	Pipe, meat wrap, cooking oil bottles	6.5%
4	LDPE - Low-density polyethylene	Wrapping films, grocery bags	27%
5	PP - Polypropylene	Syrup bottles, yogurt tubs, diapers	16%
6	PS - Polystyrene	Coffee cups, "clamshells"	16%
7	Other		8.5%

ALUMINUM BEVERAGE CANS

Source: The Aluminum Association, 1997 and the Can Manufacturers Institute, 1997

TRENDS IN WASTE GENERATION, RECOVERY & DISPOSAL**Select Data View:** [lbs/per/day] [tons/year] [% of generation]

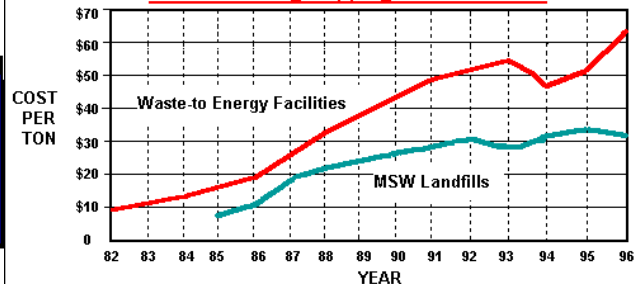
Source: Characterization of MSW in the US: 1996 Update, US EPA, Washington, DC

WASTE MANAGEMENT PRACTICES, 1960-2000
(in millions of tons per year)

	1960	1970	1980	1990	1995	2000
Generation	88.1	121.1	151.6	197.3	208.0	221.7
Recovery for recycling/composting	5.6	8.0	14.5	33.8	56.2	66.6
Discards after recovery	82.5	113.0	137.1	163.4	151.9	155.1
Combustion	27.0	25.1	13.7	31.9	33.5	36.0
Discards to landfill	55.5	87.9	123.4	131.6	118.4	119.1

Select Data View: [lbs/per/day] [tons/year] [% of generation]

Source: Characterization of MSW in the US: 1996 Update, US EPA, Washington, DC

National Average Tipping Fees in the U.S.

Sources: BioCycle Magazine, Resource Recovery Yearbook, Waste Age Magazine



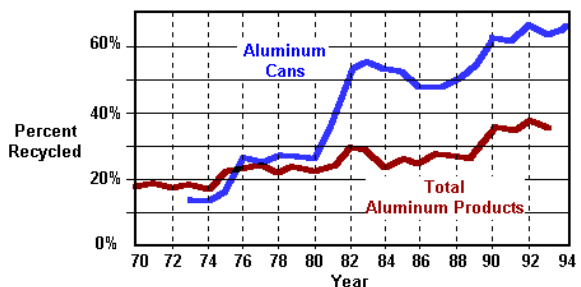
A one gallon HDPE milk container that weighed 120 gms. in the 1960's, now weighs just 65 gms.

Over 25% of all plastic bottles and nearly 20% of all plastic containers were recovered in the US in 1995.

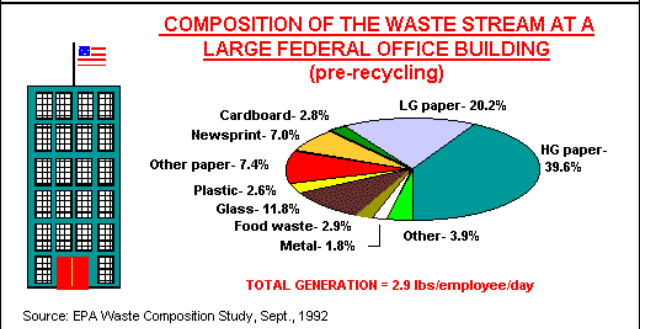
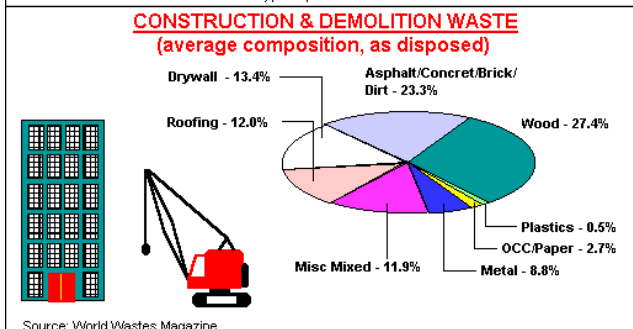
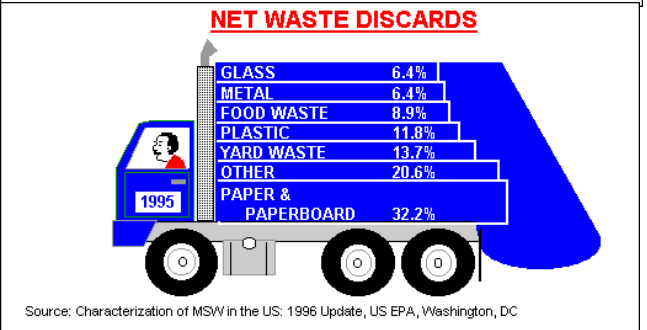
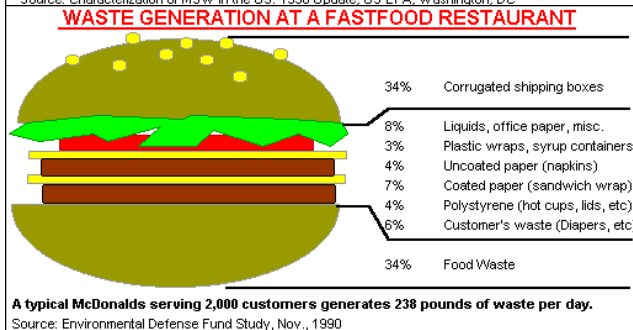
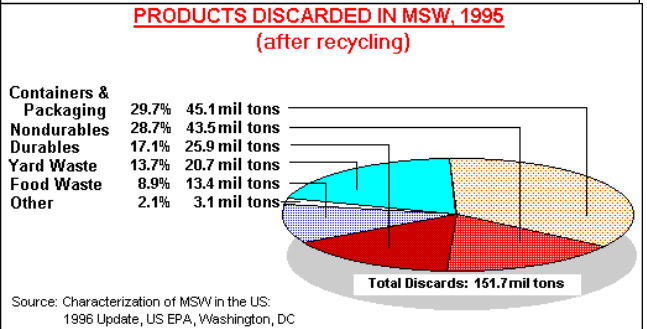
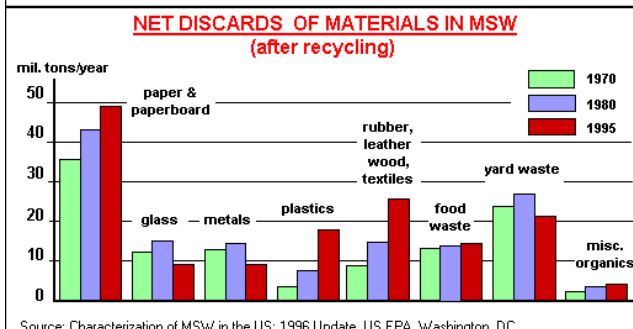
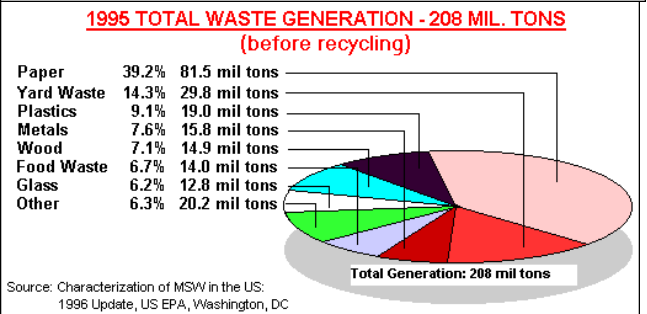
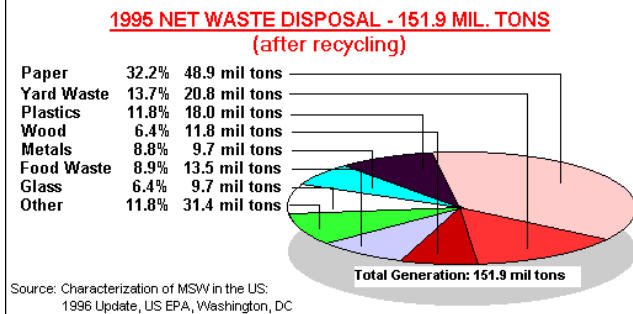
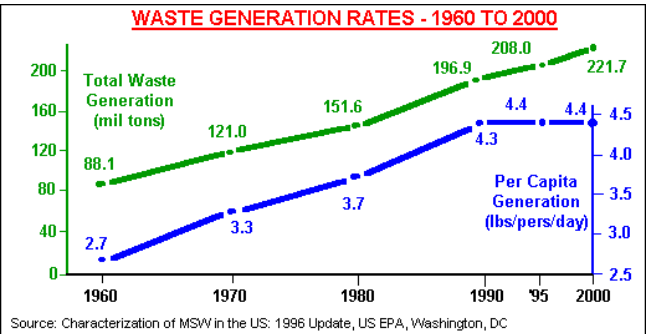
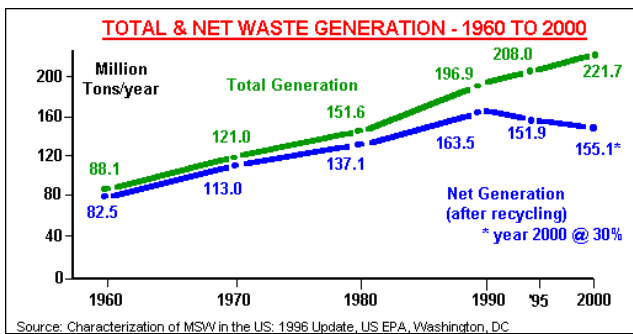
The amount of plastic waste generated has been increasing by about 10% per year for the past 20 years!

About half of all American households have access to a plastics recycling program.

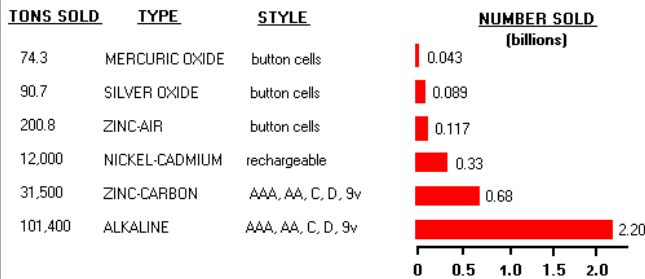
Source: Society of the Plastics Industry, 1997

ALUMINUM RECYCLING RATES

Source: Aluminum Assoc., Aluminum Statistical Review

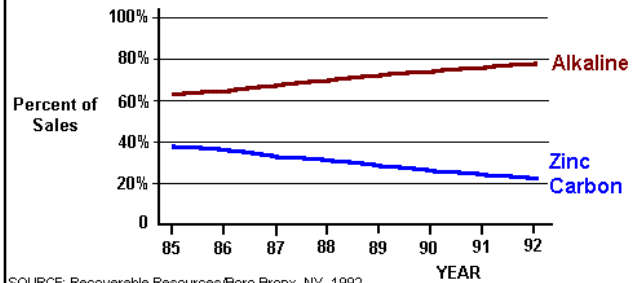


ESTIMATED CONSUMER BATTERY SALES, 1992



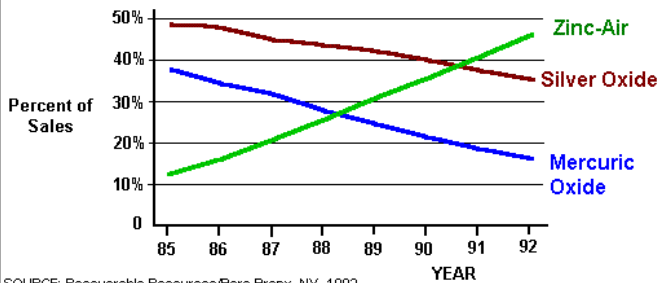
SOURCE: Recoverable Resources/Boro Bronx, NY, 1992

Sales of Single Use Household Batteries in the U.S.



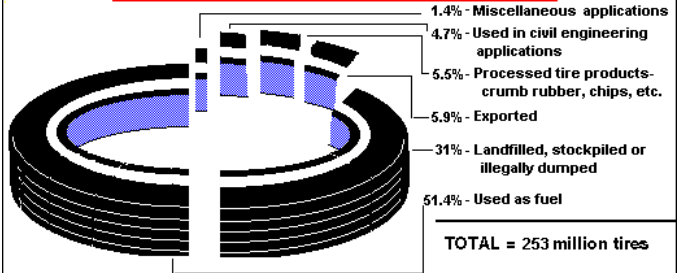
SOURCE: Recoverable Resources/Boro Bronx, NY, 1992

Sales of Button Cell Batteries in the U.S.

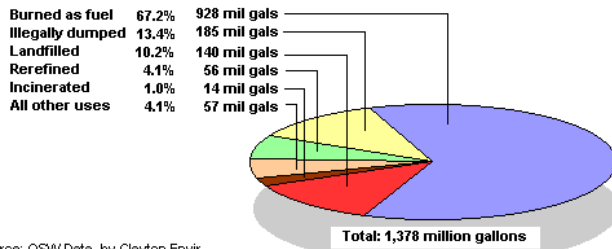


SOURCE: Recoverable Resources/Boro Bronx, NY, 1992

DISPOSITION OF SCRAP TIRES, 1995

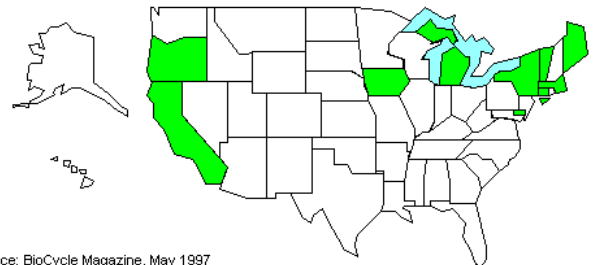


USED OIL DISPOSAL PRACTICES, 1991



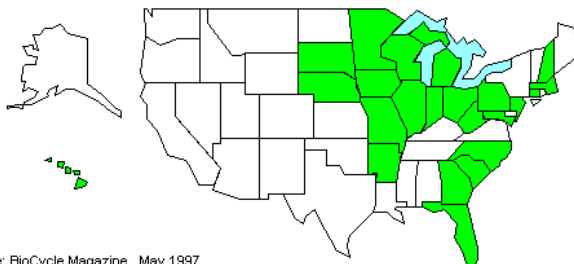
Source: OSW Data, by Clayton Envir. Consultants, Lexington, MA, 1992

STATES WITH BOTTLE DEPOSIT RULES



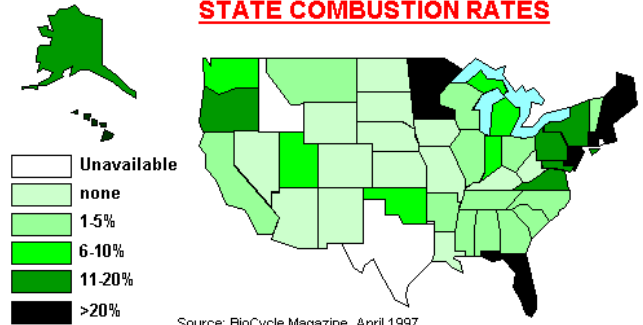
Source: BioCycle Magazine, May 1997

STATES WITH YARD WASTE BANS



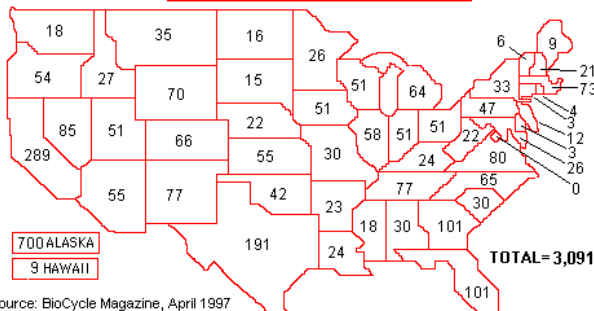
Source: BioCycle Magazine, May 1997

STATE COMBUSTION RATES



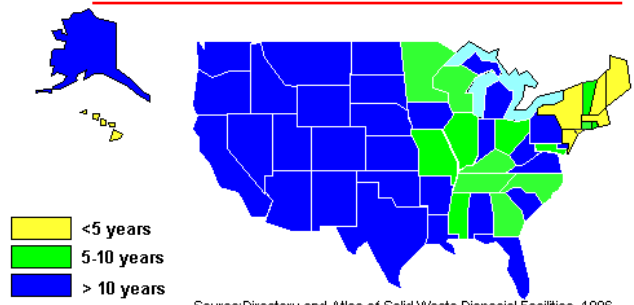
Source: BioCycle Magazine, April 1997

NUMBER OF LANDFILLS



Source: BioCycle Magazine, April 1997

YEARS OF REMAINING LANDFILL CAPACITY



Source: Directory and Atlas of Solid Waste Disposal Facilities, 1996