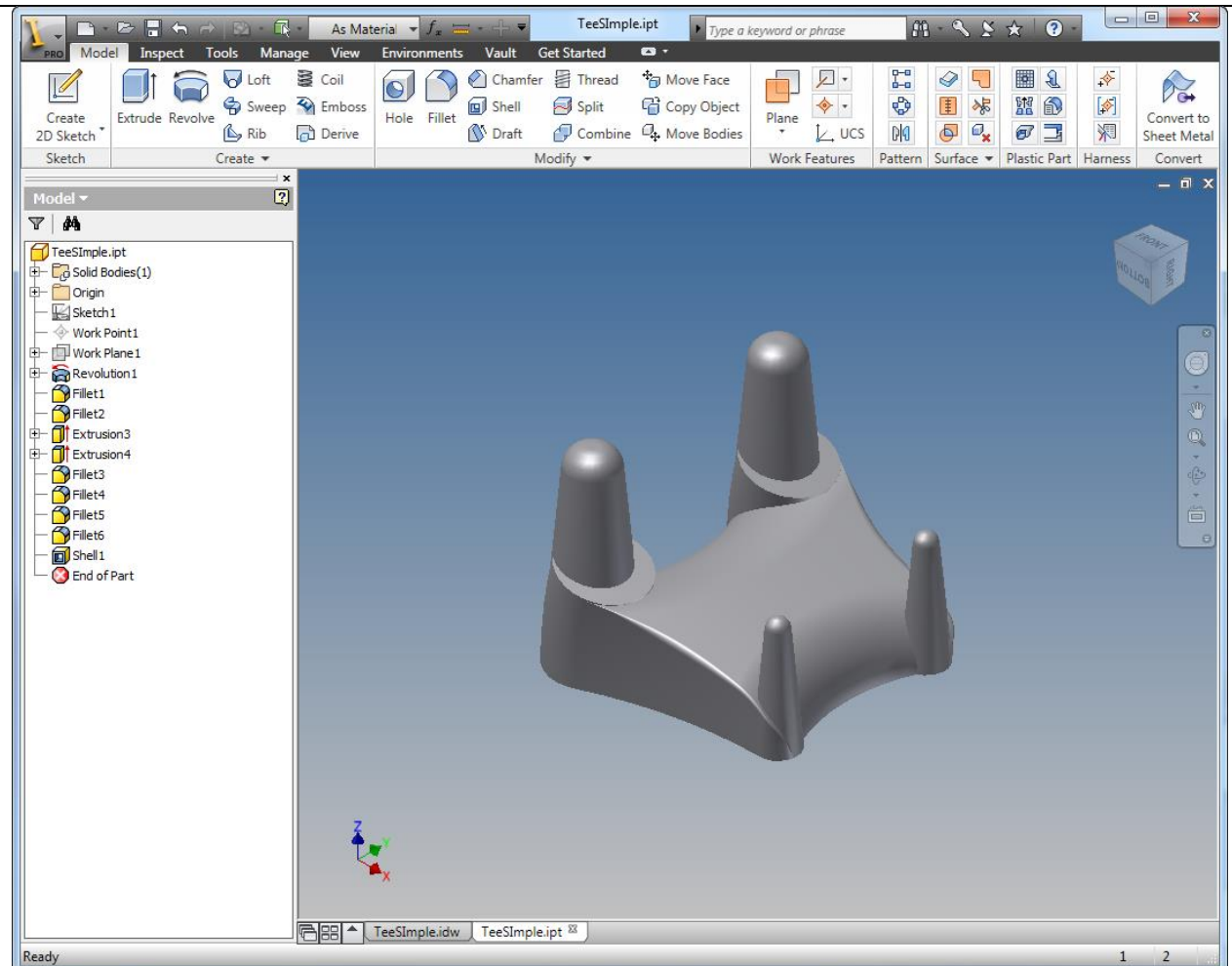


# Part Model – Tee

Jcs - 9/28/2012

This is an example of the part model for a tee /stand.

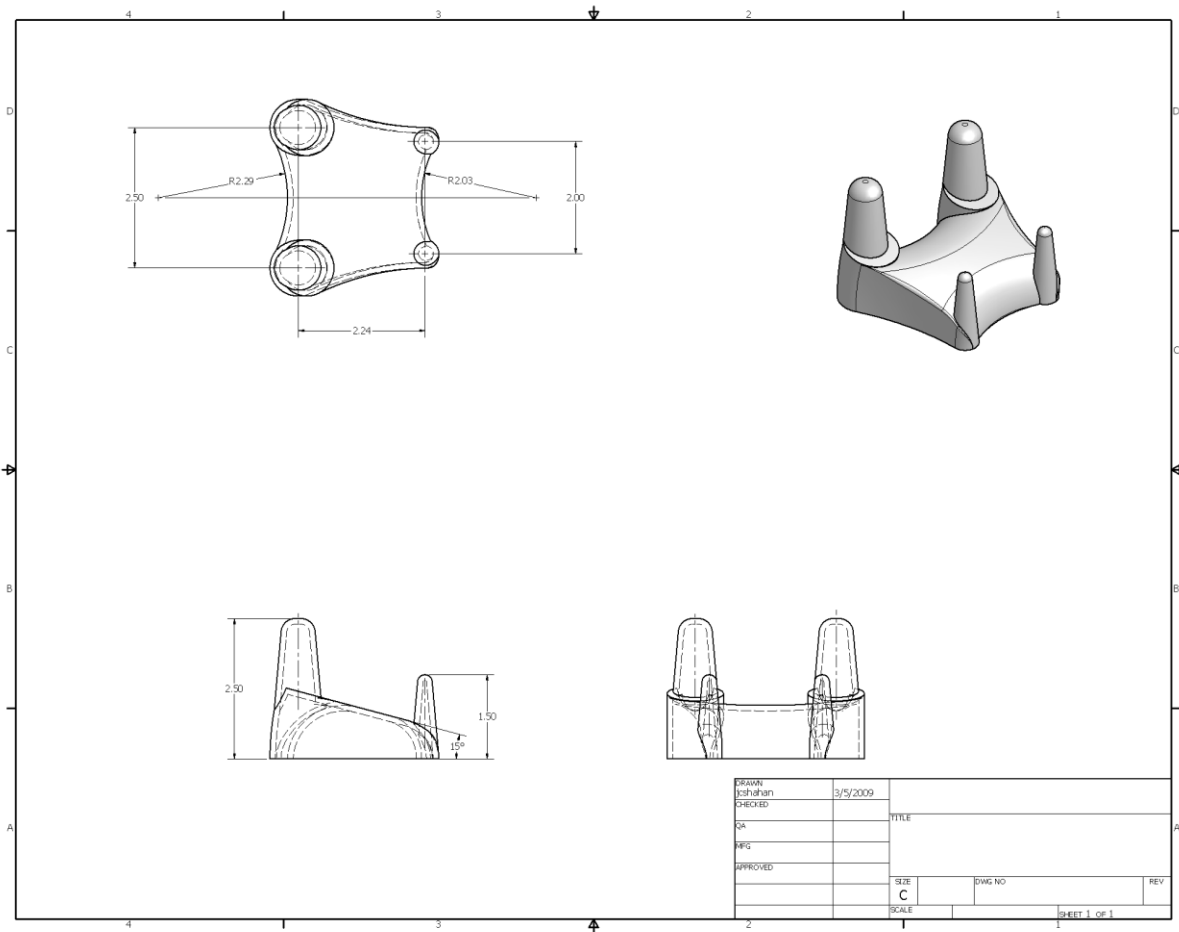


Use the known features of the software to create the stands/ tees

- Extrude | Revolve | Fillet | Shell | Other...

# Part Drawing – Tee / Stand

This is an example of the part drawing for you Tee



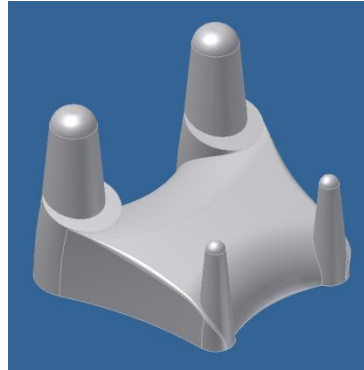
Include the following

1. Necessary Views: Use enough views to completely show the detail. Could include the following
  - a. Section Views
  - b. Detail Views
2. Dimensions: Just include enough dimensions to indicate the overall size.

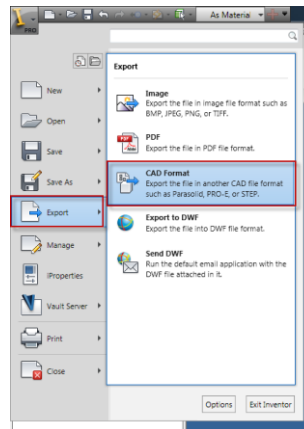
# Part Model - Export

## Create the .stl file

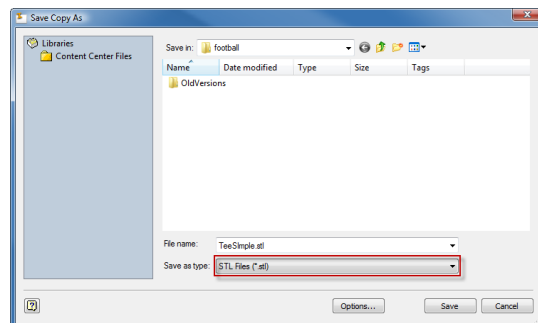
1. Open the .ipt file



2. Select:
  - a. Export
  - b. CAD format



3. Select
  - a. Save as type: STL Files (\*.stl)



4. Copy the file to the proper submit folder.