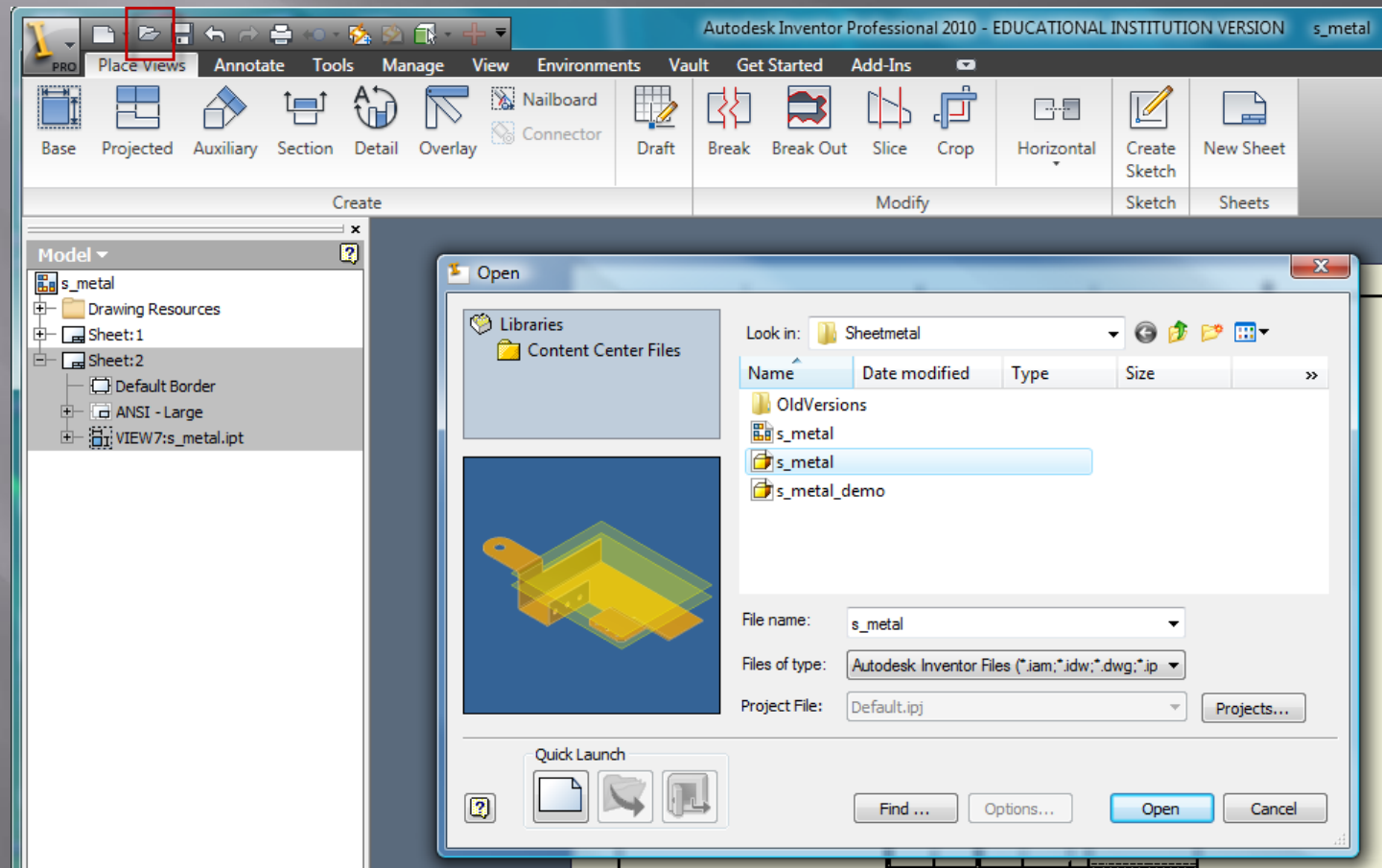


# SHEET METAL EXAMPLE

Part Drawing

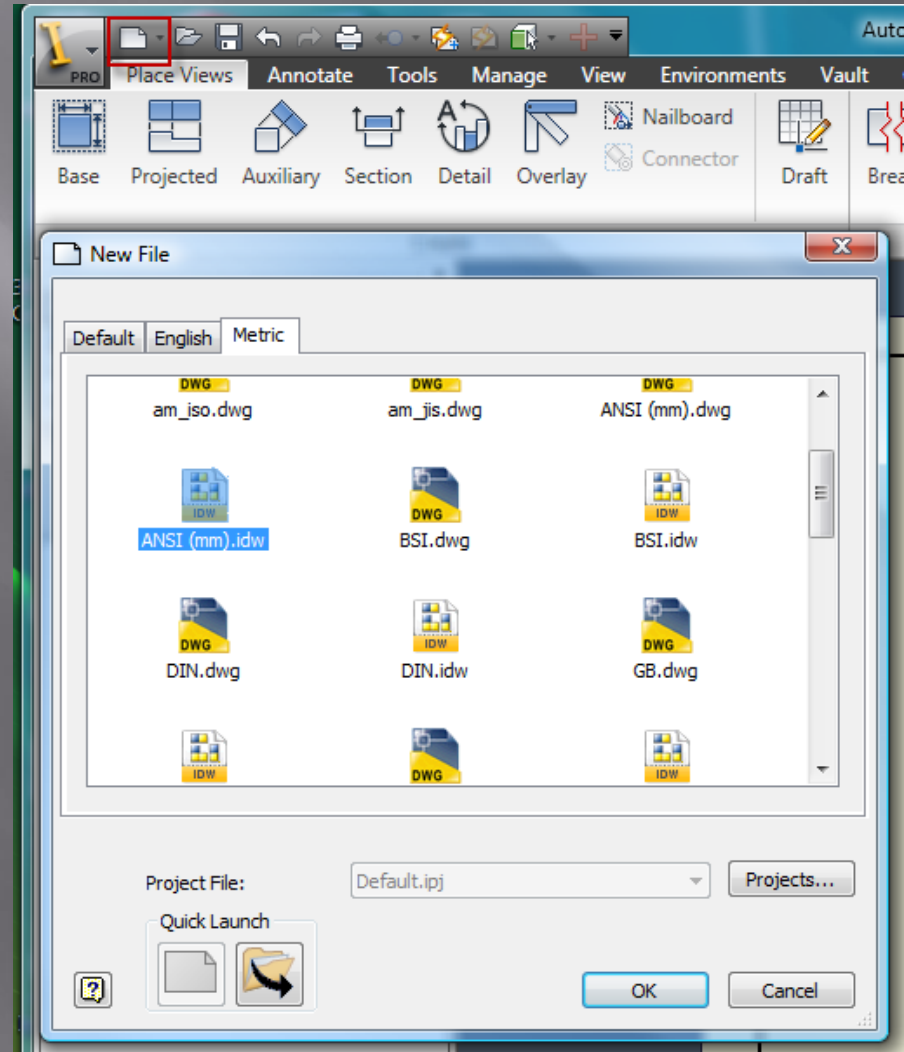
# Open

## □ Part Model



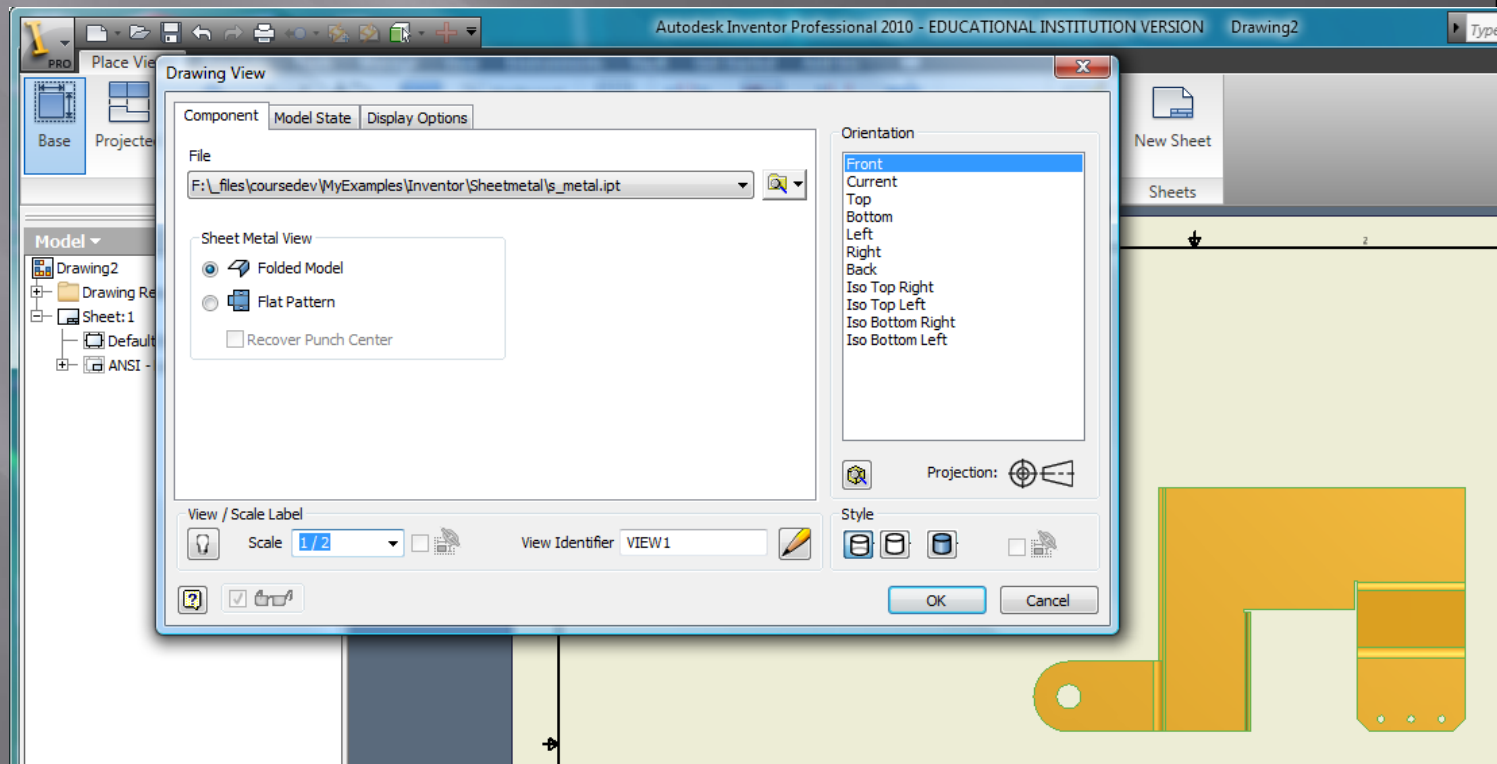
# New

- New
  - Metric
    - ANSI (mm).idw



# Base View

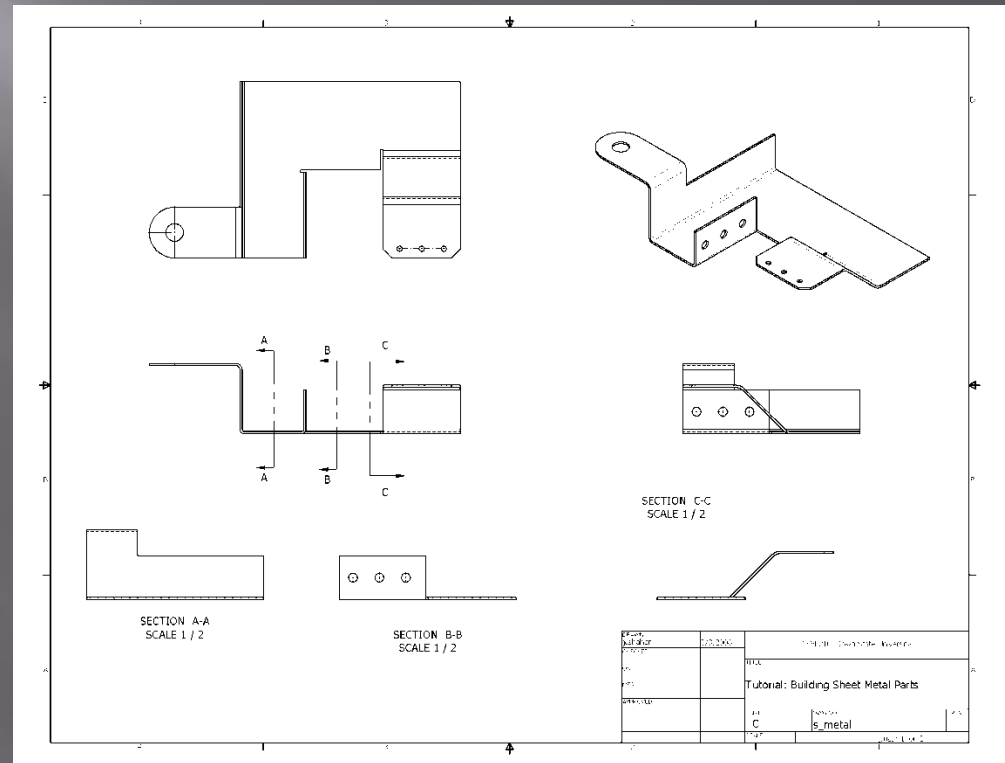
- Orientation
- Folded Model
- Scale

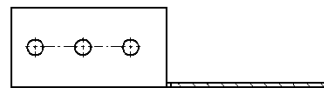
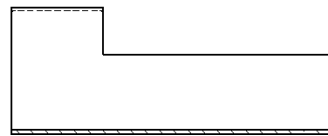
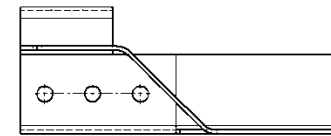
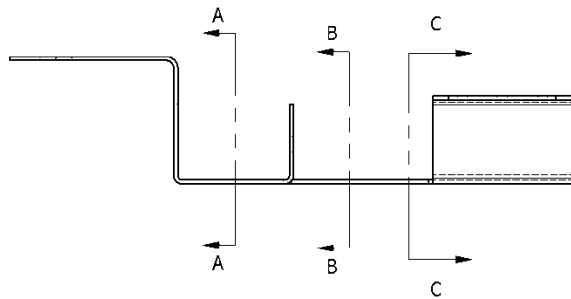
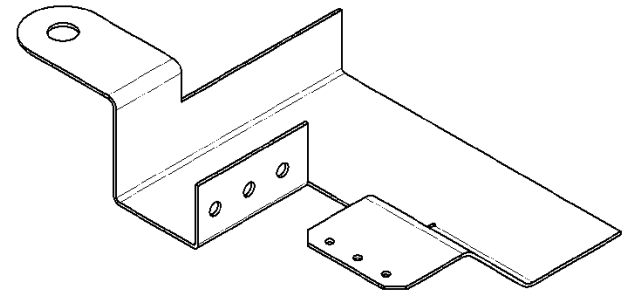
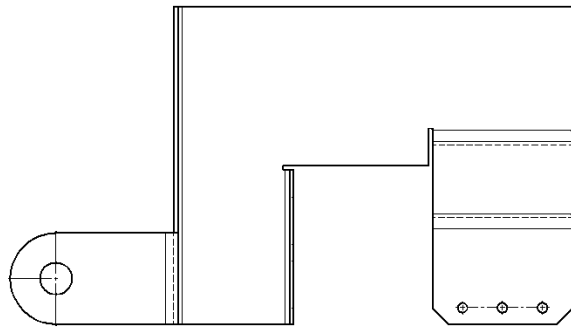


# Other views / details

- ▣ Views
  - Projected
  - Section (Removed)
    - ▣ Section Thickness
- ▣ Details
  - Center Marks
  - Centerlines

See Next Slide





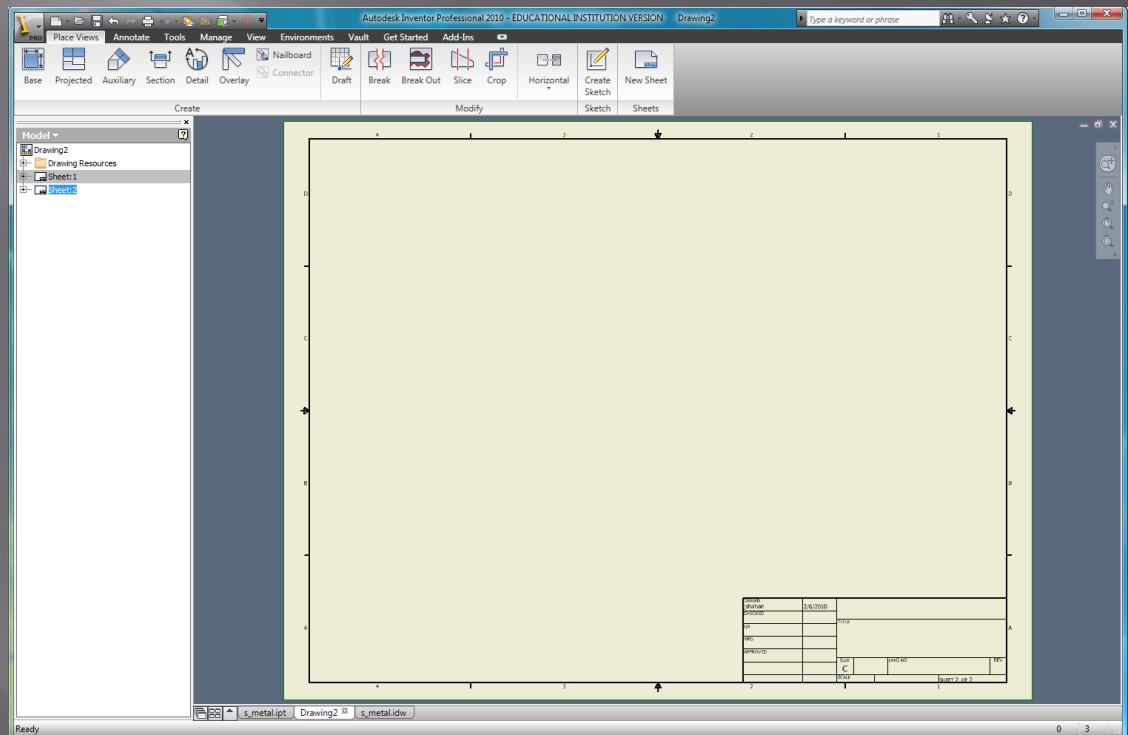
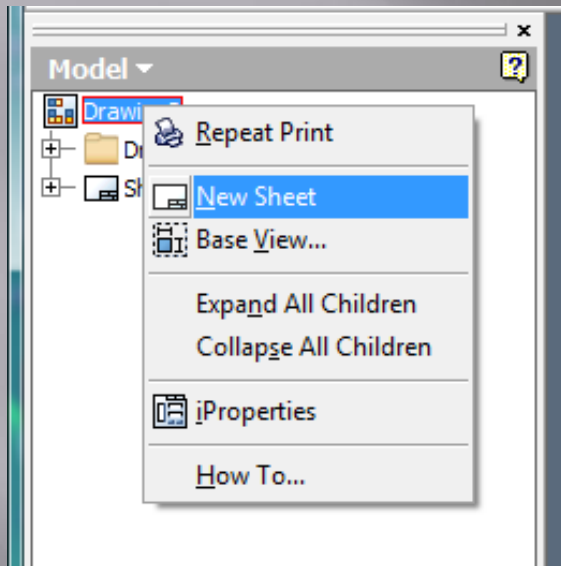
SECTION C-C  
SCALE 1 / 2

SECTION A-A  
SCALE 1 / 2

SECTION B-B  
SCALE 1 / 2

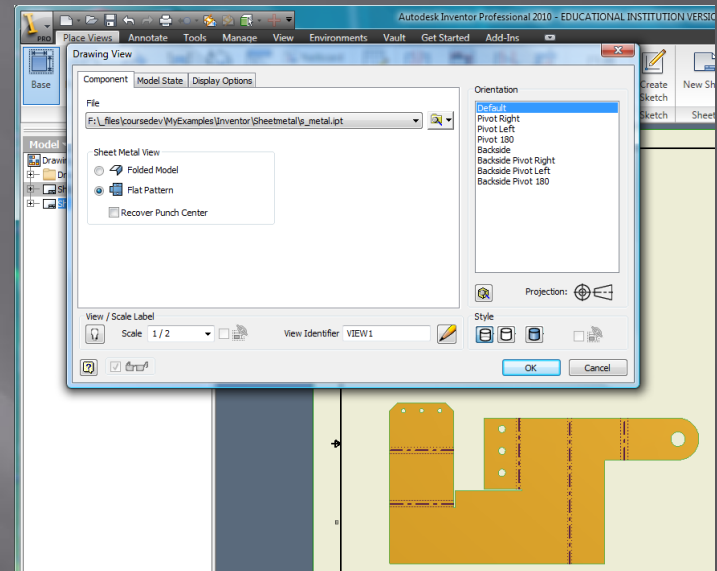
DRAWN jshahan	3/3/2008	TSM 216 - Icwa State University		
CHECKED		TITLE		
QA		Tutorial: Building Sheet Metal Parts		
MFG		SIZE	DWG NO	REV
APPROVED		C	s_metal	
		SCALE		SHEET 1 OF 2

# New Sheet



# Base View

- Flat Pattern
- Scalee

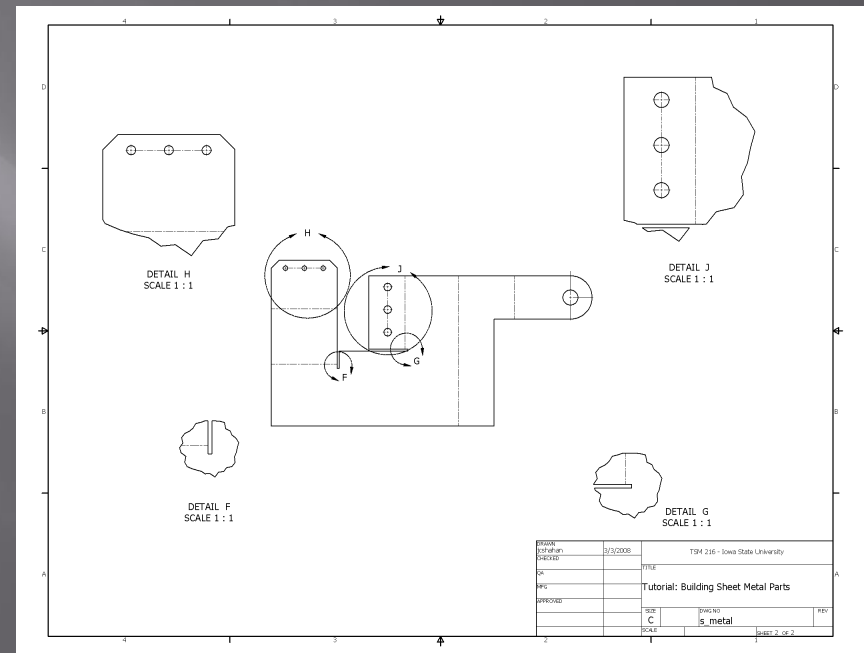


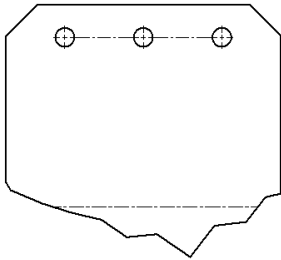


# Other Views / Details

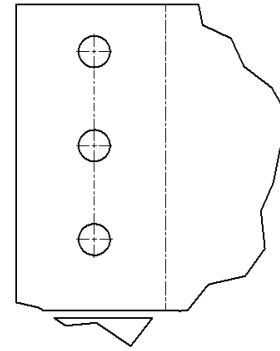
- ▣ Views
  - Detail
- ▣ Details
  - Center Marks
  - Center lines

See Next Slide

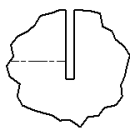




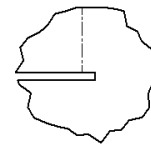
DETAIL H  
SCALE 1 : 1



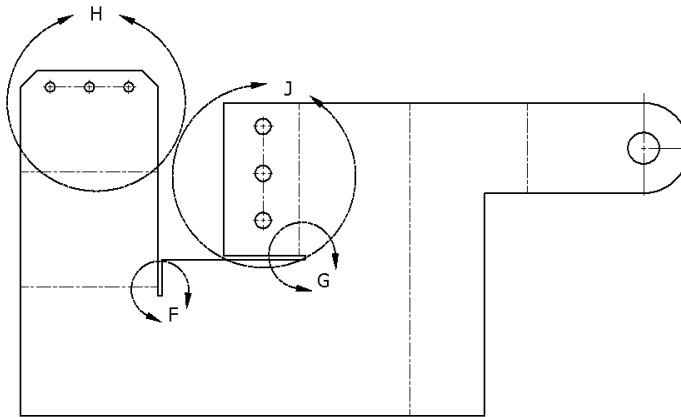
DETAIL J  
SCALE 1 : 1



DETAIL F  
SCALE 1 : 1



DETAIL G  
SCALE 1 : 1



DRAWN jshahan	3/3/2008	TSM 216 - Iowa State University	
CHECKED		TITLE	
QA		Tutorial: Building Sheet Metal Parts	
MFG		SIZE C	DWG NO s_metal
APPROVED		SCALE	REV
		SHEET 2 OF 2	