

Inventor – Project: Folders and Settings

Quick Reference - jcs

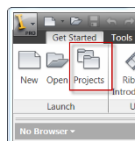
Reasons for using Projects:

- Organizing the folders / files keep things from getting lost.
- Creating / using Inventor Projects, help others find your files / folders.



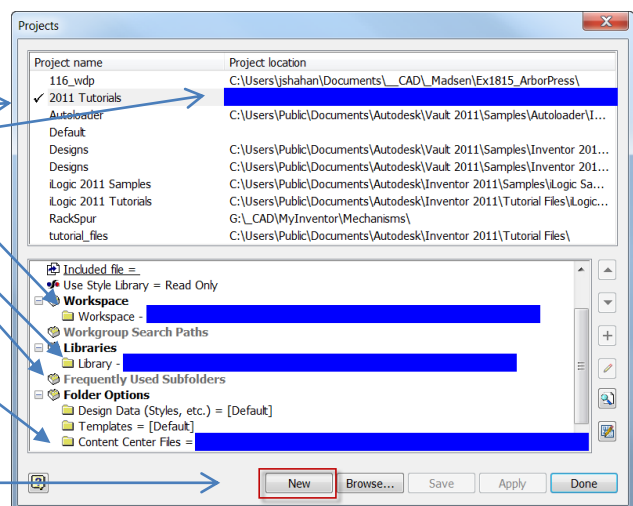
Determine: Create / Select the appropriate folders to use

1. Workspace Folders (and frequently used sub-folders) are:
 - Used for files that require changing / working on
2. Library Files are:
 - Protected from being changed.
 - Probably used by more than one person.
3. Content Center
 - is part of the program (contains > 30,000 standard parts)
 - Folder created holds only the parts that you select to use.



Inventor Settings - Projects:

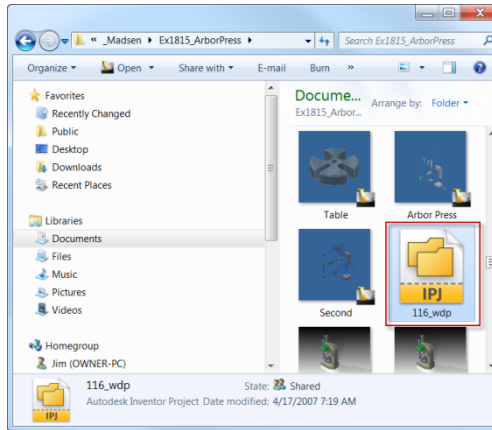
1. New
2. Create / Verify the settings
 - a. Project name
 - b. Project location:
 - c. Workspace:
 - d. Library:
 - e. Frequently used sub-folders
 - f. Content Center Files:



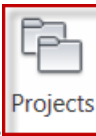
Inventor – Project: Folders and Settings

Quick Reference - jcs

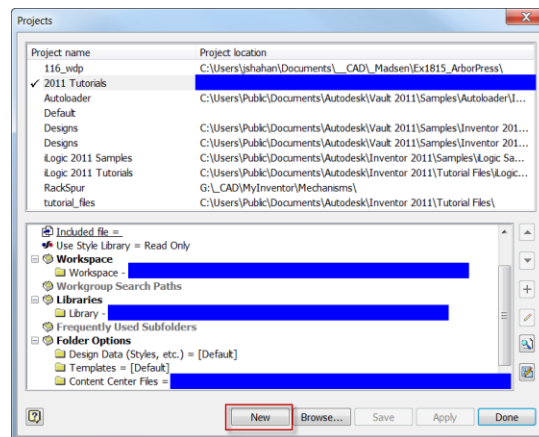
Project Test / Verification



1. Find the project file (.ipj)
 - a. <Double-click> the icon: Starts Inventor and sets the project.
2. Verify the project settings:



- a. Select: Projects
- b. Verify: (see previous page)
 - i. Project Name:
 - ii. Project Location:
 - iii. Workspace
 - iv. Libraries
 - v. Content Center Files



3. Make sure the project / folder used consistently.