

Drawing – Setup Intro

Using Autodesk Inventor

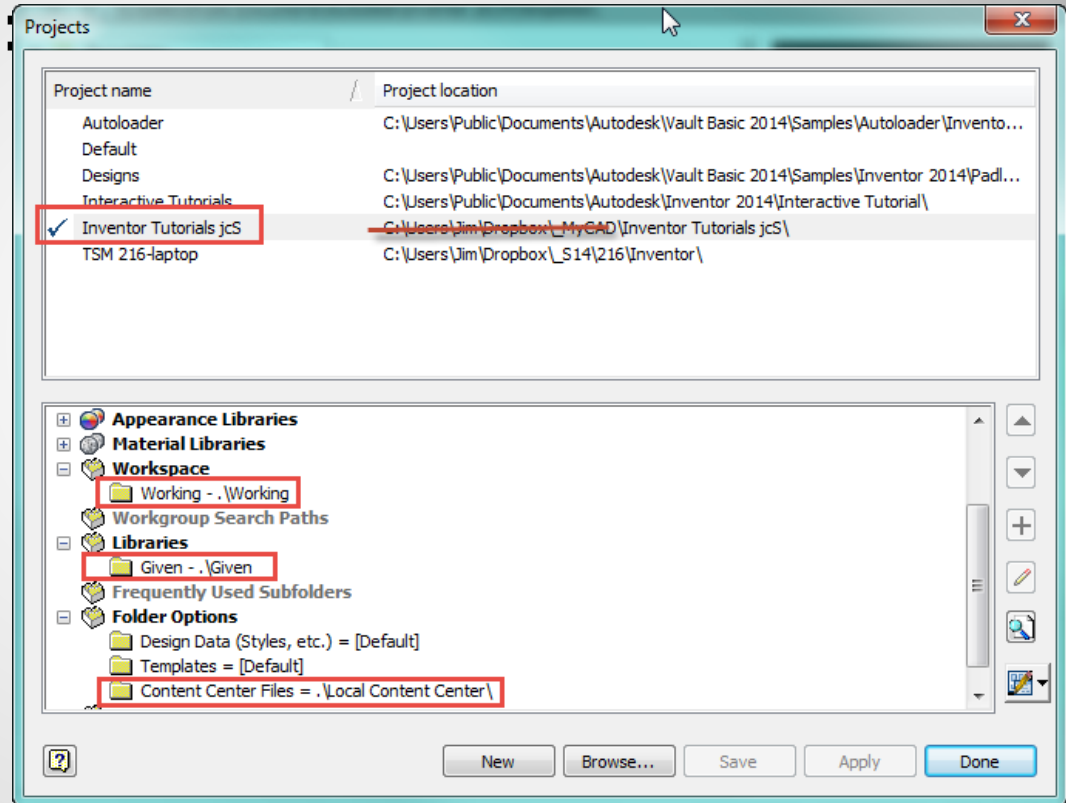
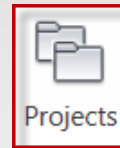
1.INITIALIZATION

- Inventor

- Projects (Verify)

- Project Name

- Other



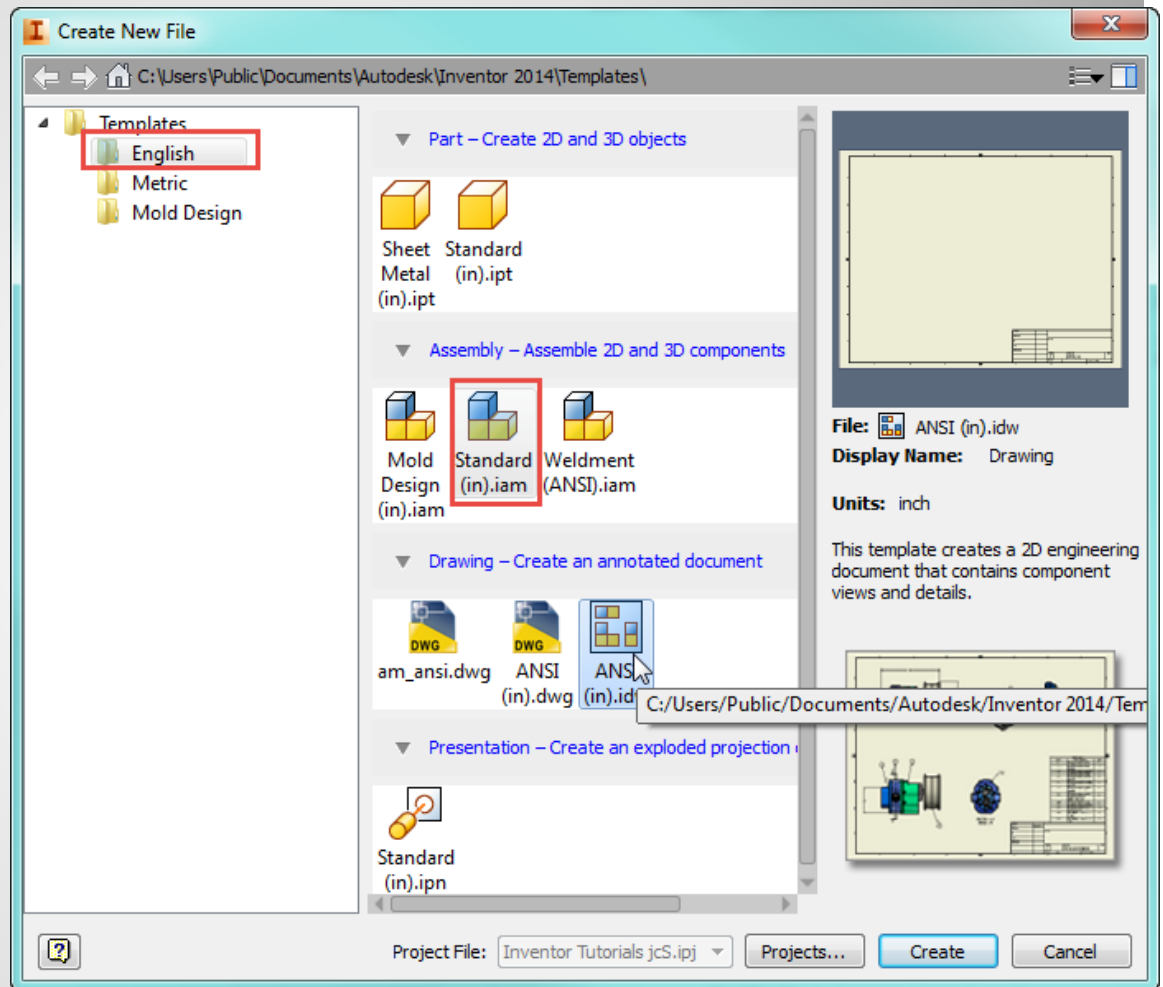
a. Startup

- New




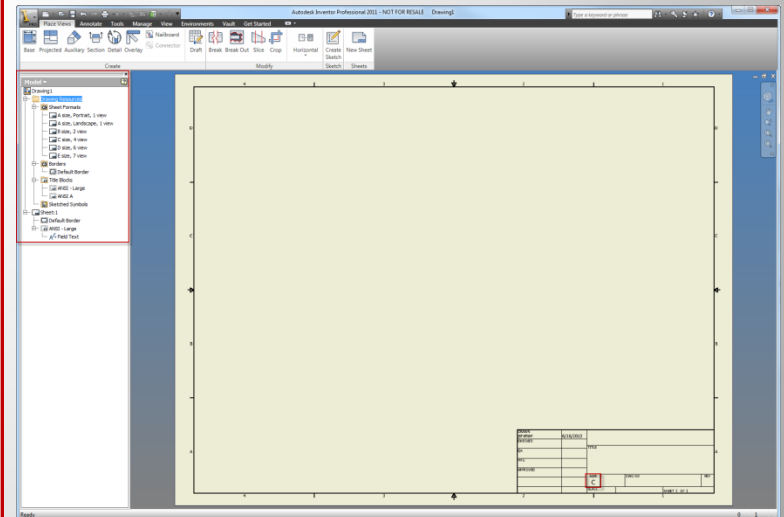
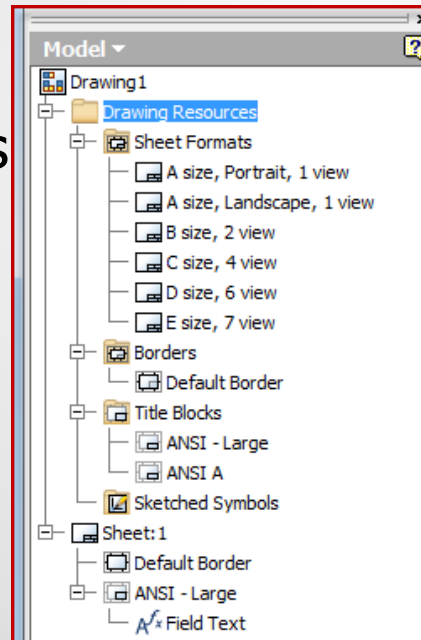
- English

- ANSI(in).idw



b. New Drawing

- Note:
 - C (17in.x22in). 
 - Drawing Area vs. Titleblock
 - Resources
 - Formats
 - Borders
 - Titleblocks
 - Sheets



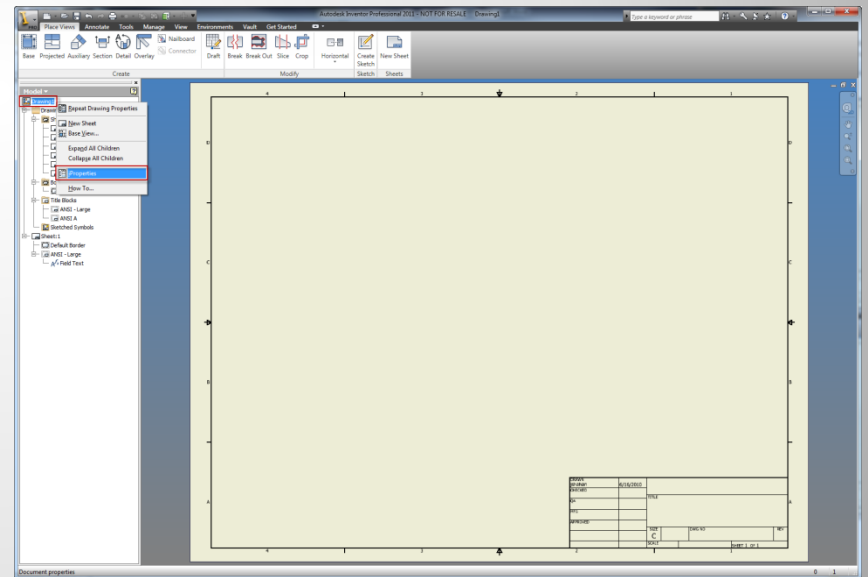
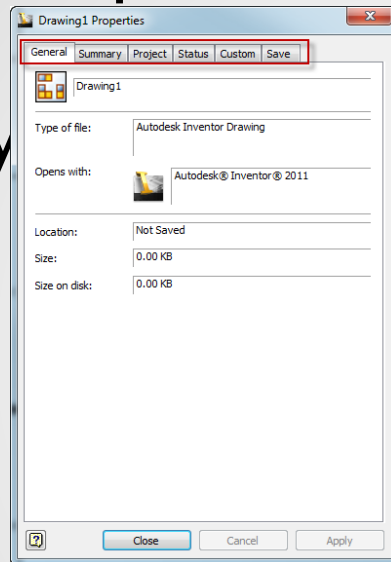
c. Drawing Layout

2. STANDARD ITEMS

✓ Drawing 

✓ <RMB> iProperties 

- General
- Summary
- Project
- Status
- Custom
- Save



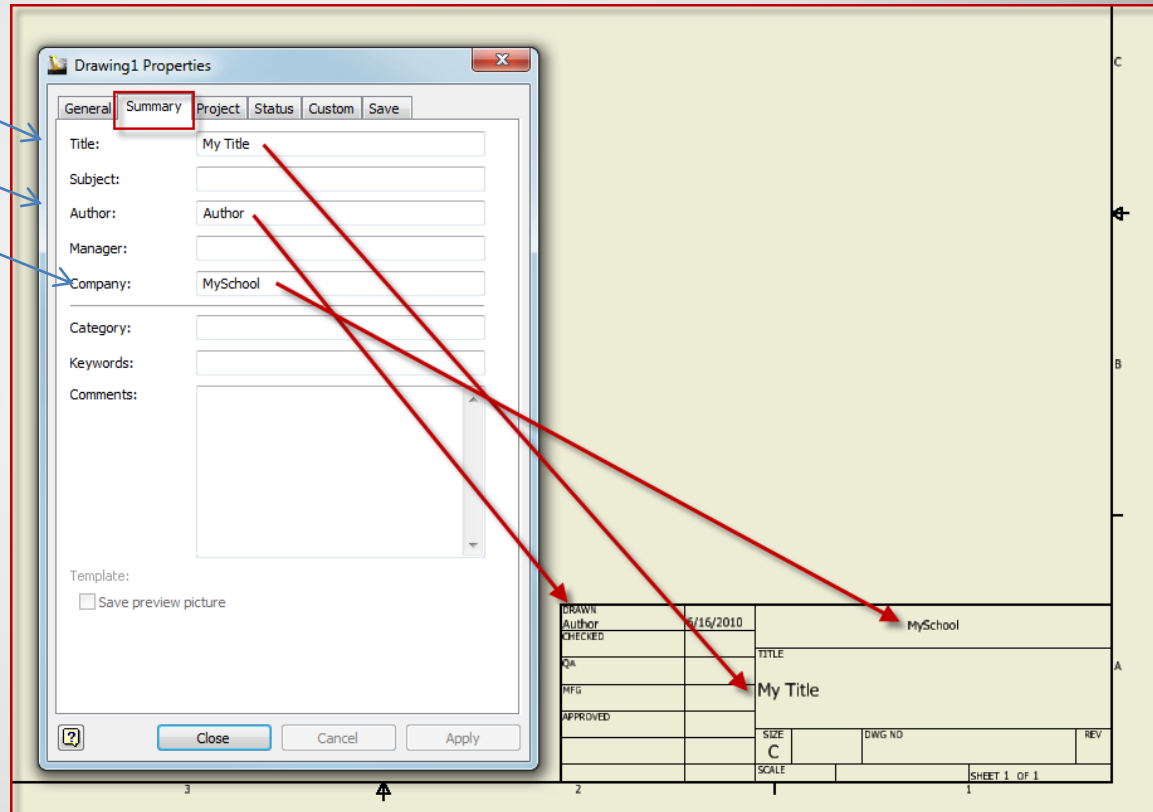
a. Drawing - iProperties

☑ Drawing

☑ <RMB> iProperties - Summary

Summary

- Title
- Author
- Company



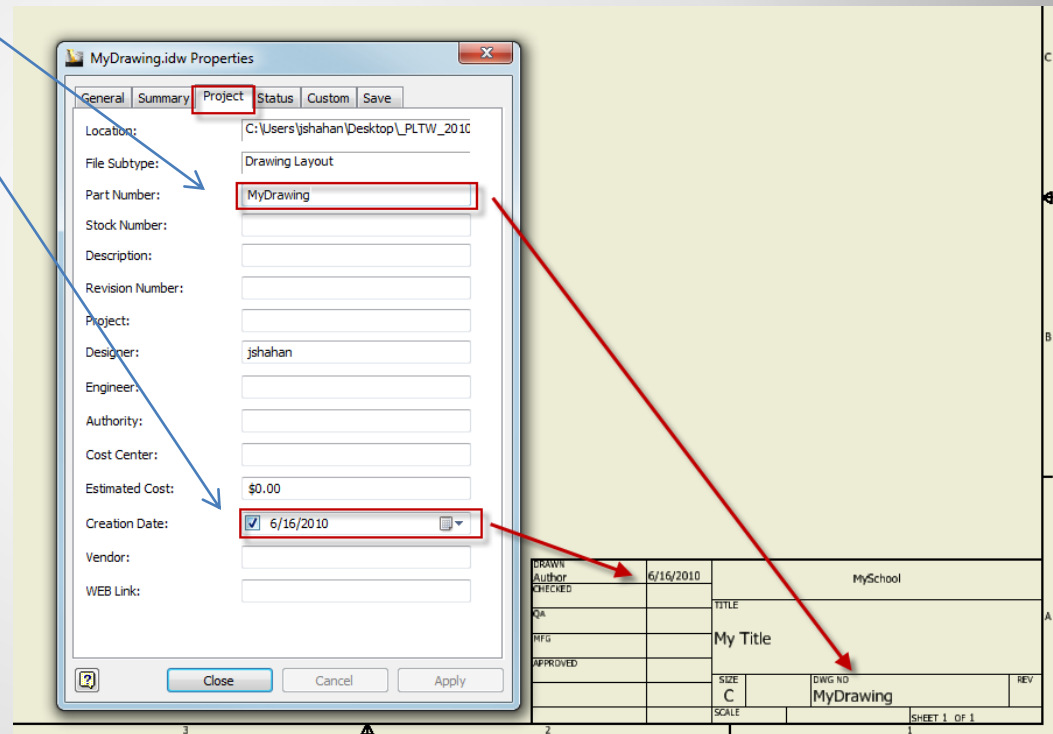
b. iProperties - Summary

☑ Drawing

☑ <RMB> iProperties - Project Project

○ Part Number (File name)

○ Creation Date



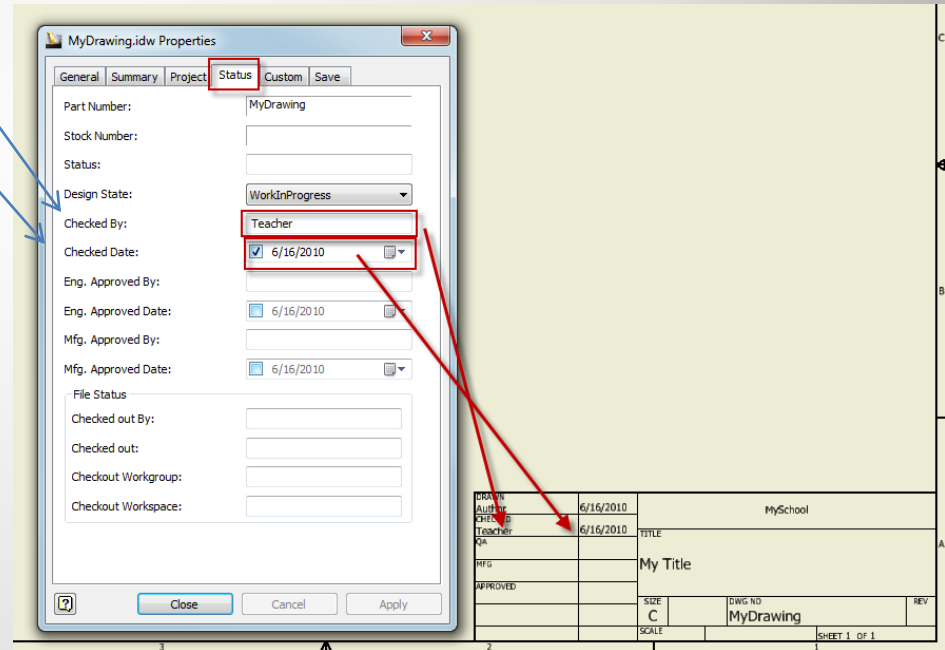
c. iProperties - Project

☑ Drawing

☑ <RMB> iProperties - Project **Project**

○ Checked By

○ Checked Date



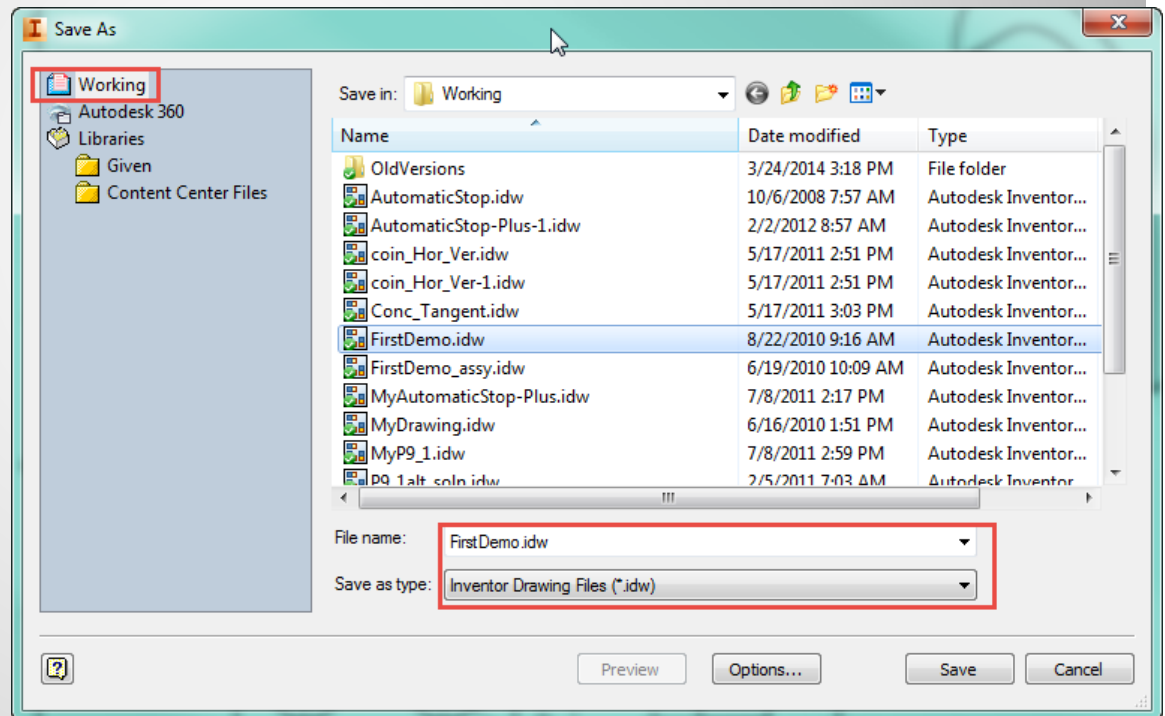
d. iProperties - Status

3. SAVE

- Save



- Workspace
- File name:
- Save as type



a. Save