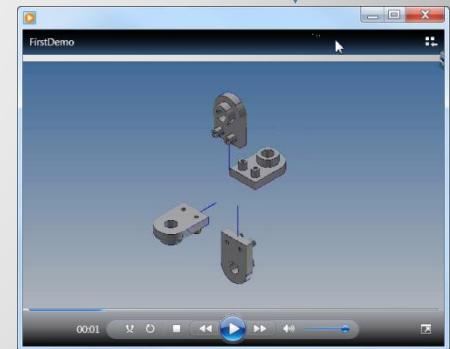
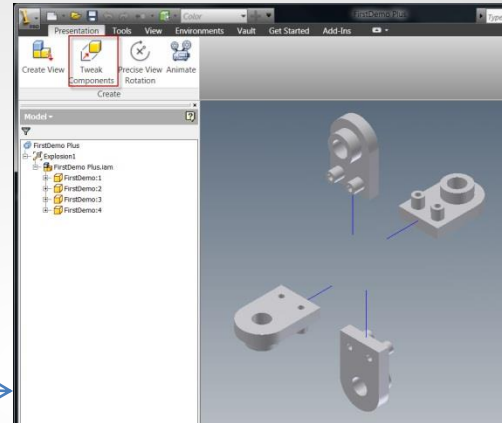
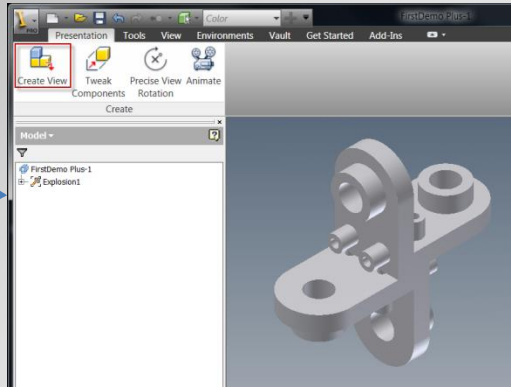
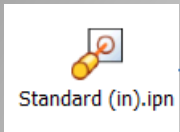


Presentation Modeling

Part I: Intro

Using Autodesk Inventor
Level: Introduction

Tweaks: Translation
Animation



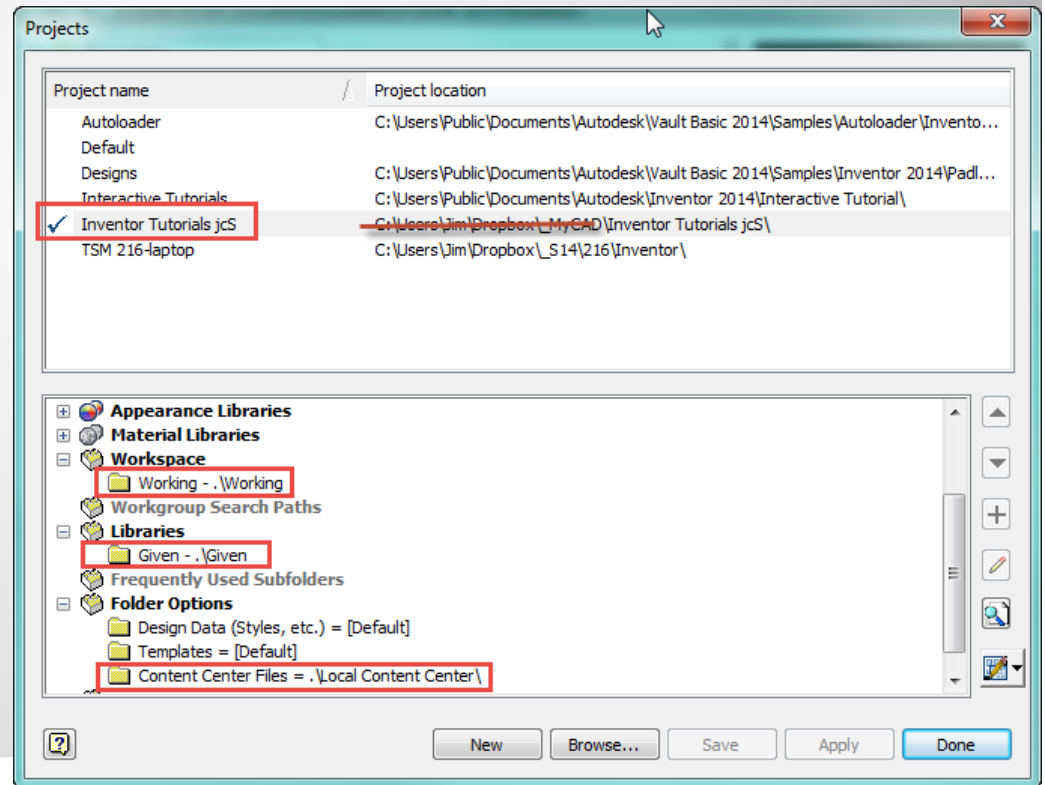
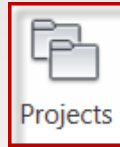
1. New: Presentation
2. Create View
3. Tweak Components
4. Animate

INTRO

Linked to animation

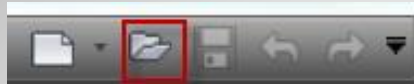
1.INITIALIZATION

- Start Inventor
- Verify project
 - Selected Project
 - Workspace
 - Libraries
 - Folder Options

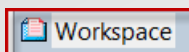


a. Startup

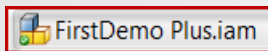
- Open



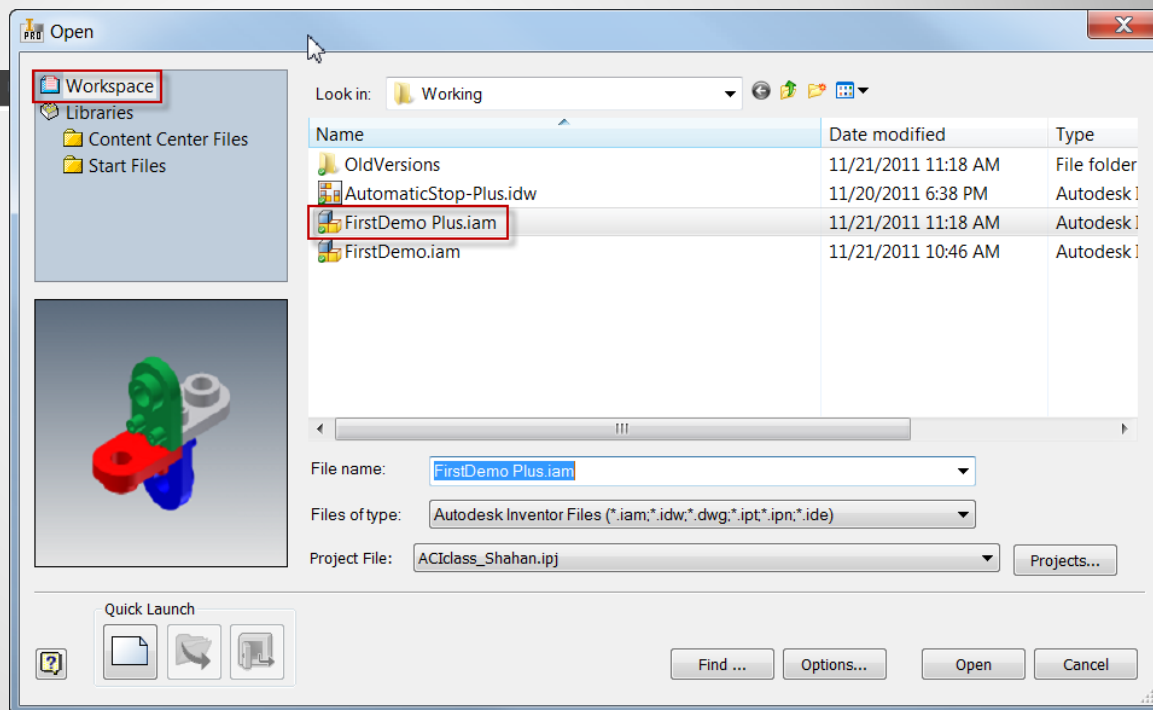
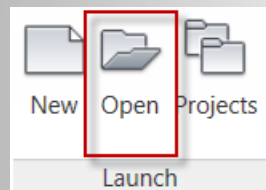
- Workspace



- File name



Get Started Tools Vault Add-Ins



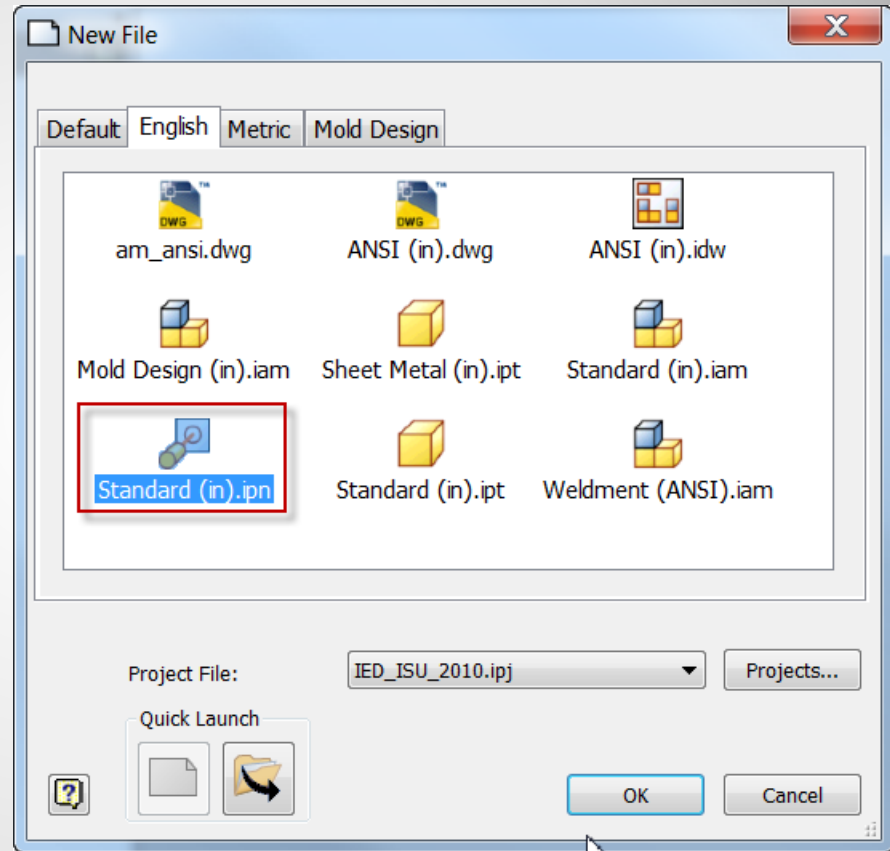
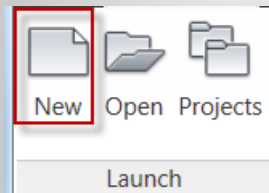
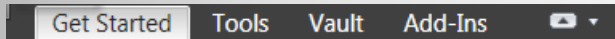
b. Open assembly file

- New



- English

- Standard(in).ipn

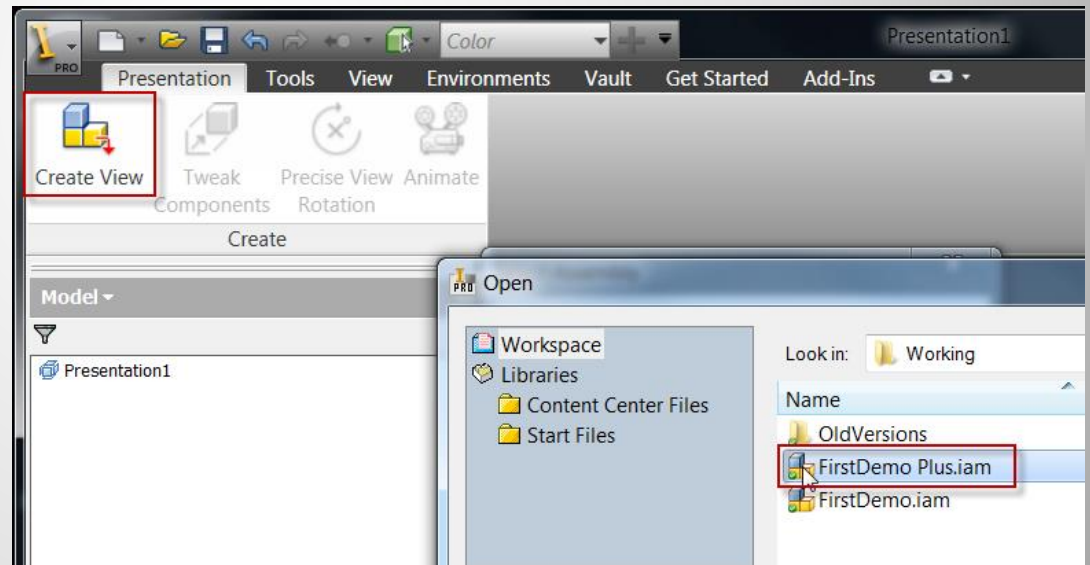
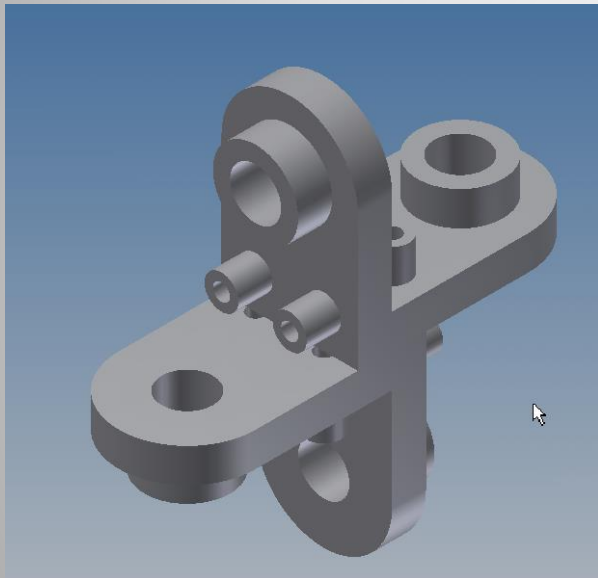
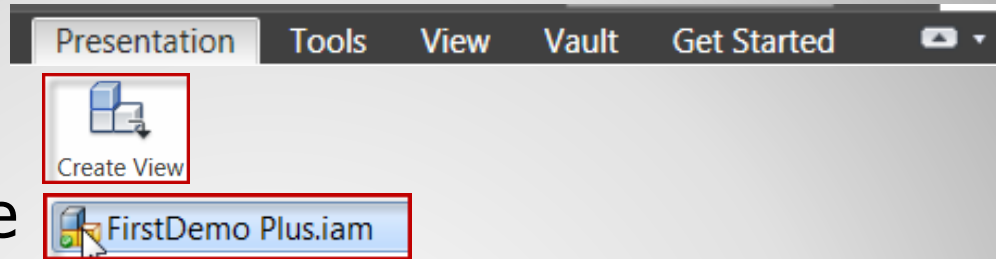


c. New Presentation Model

- Presentation

- Create View

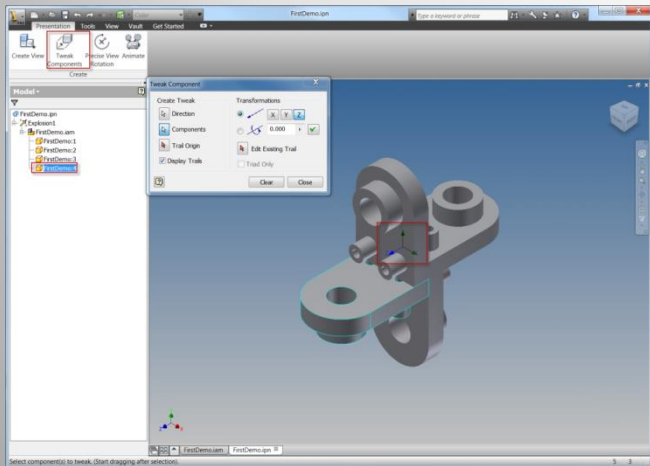
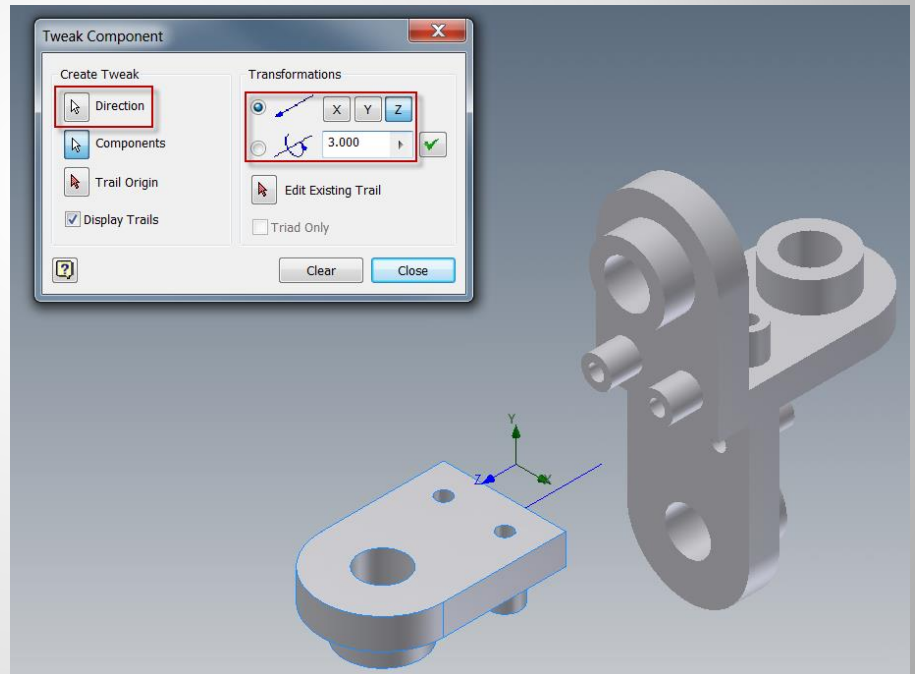
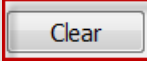
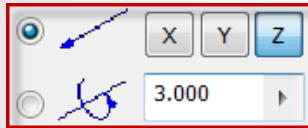
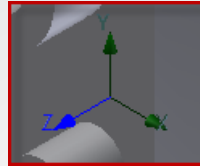
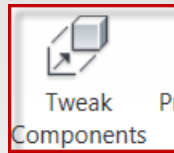
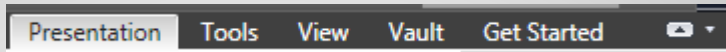
- Assembly File



d. Create View

2. TWEAK COMPONENTS

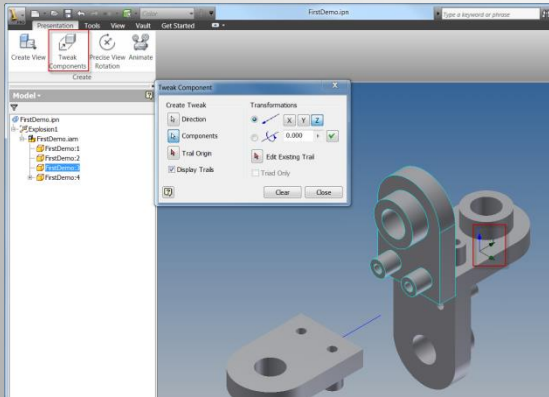
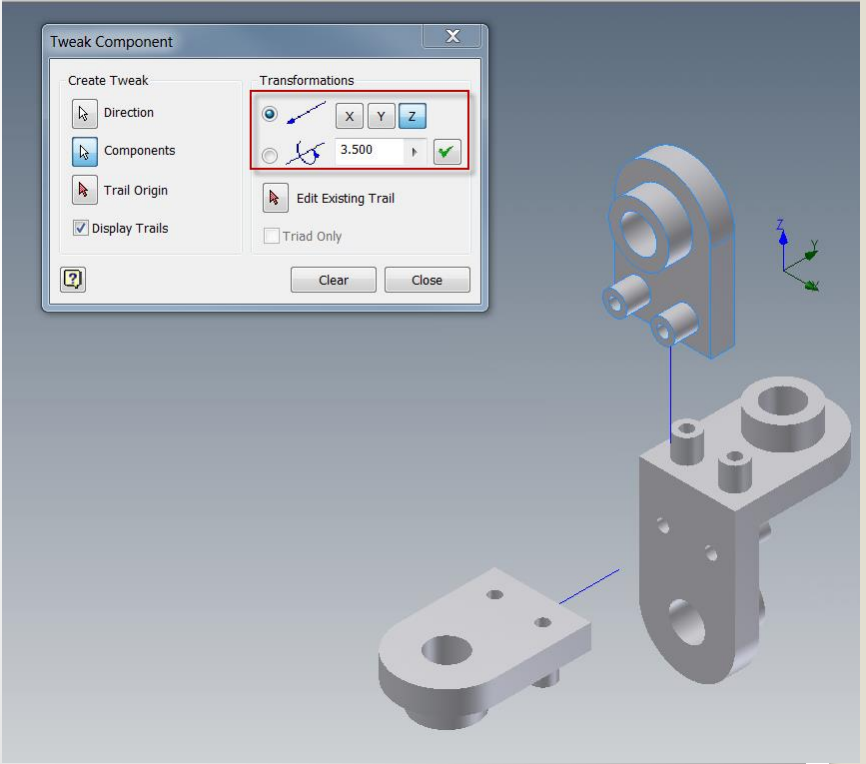
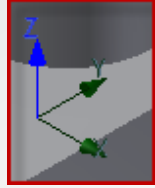
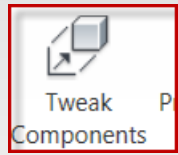
- ☑ Presentation
- ☑ Tweak Components
- ☑ Direction (z)
- ☑ Component(s)
- ☑ Trans: 3
- ☑ Clear



a. First Tweak - Linear

- ✓ Presentation
- ✓ Tweak Components
- ✓ Direction (z)
- ✓ Component(s)
- ✓ Drag: 3.5
- ✓ Clear

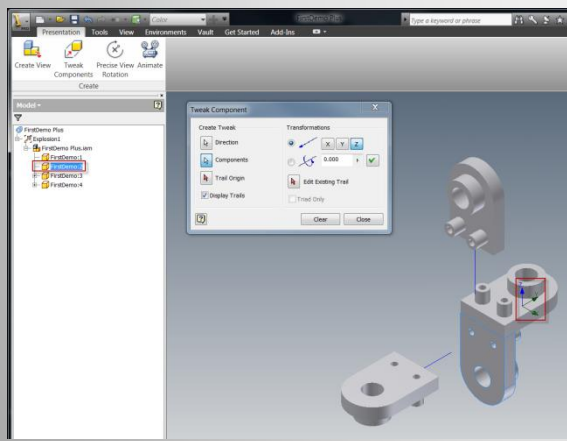
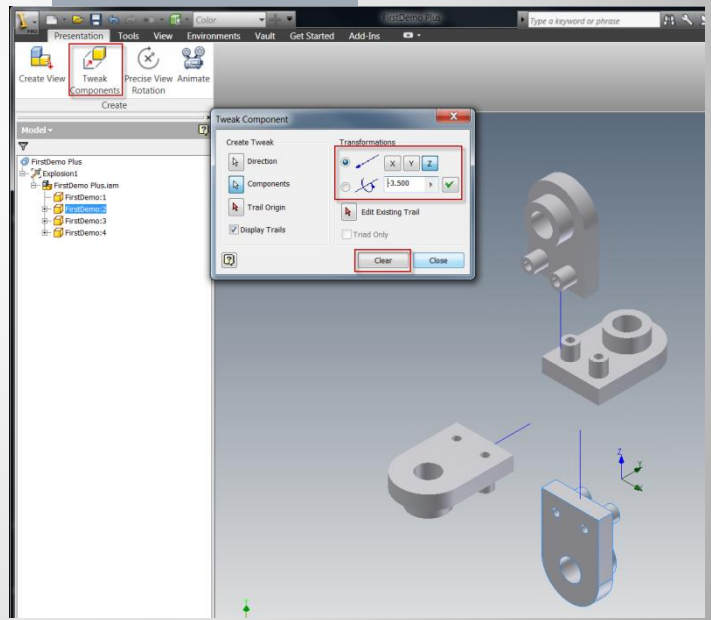
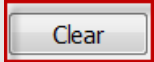
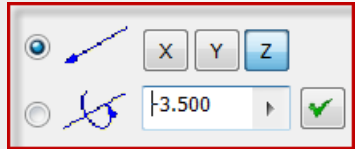
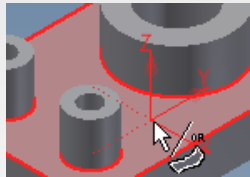
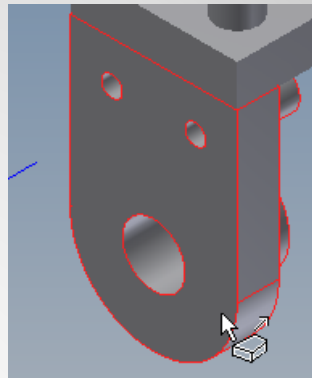
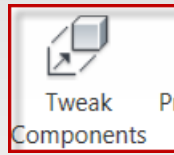
Presentation Tools View Vault Get Started



b. Second Tweak - Linear

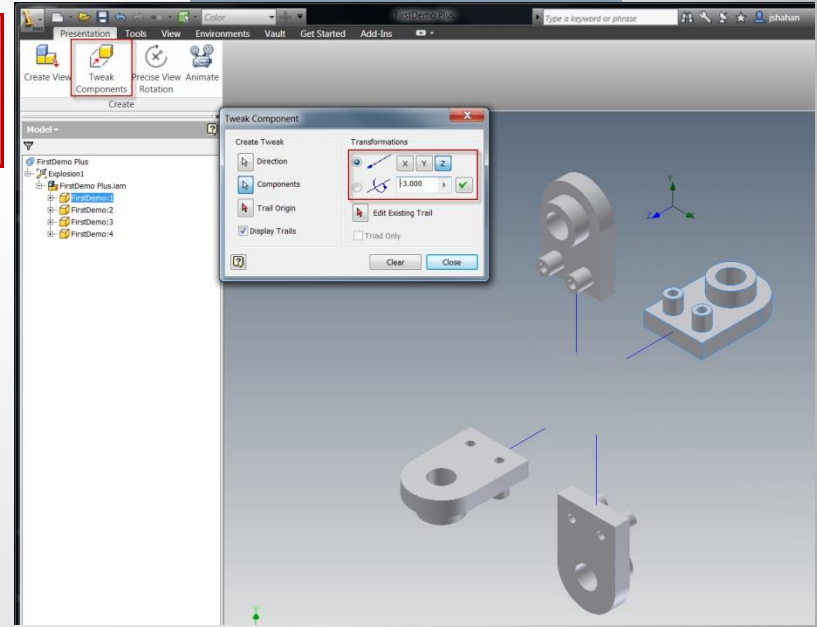
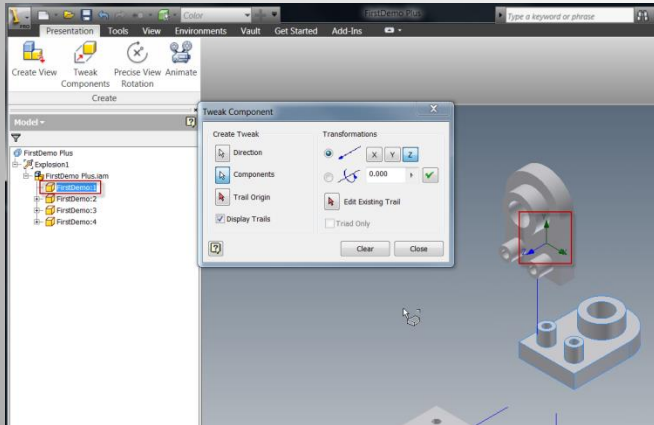
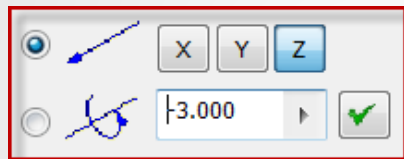
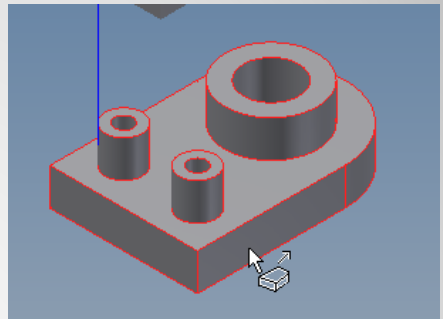
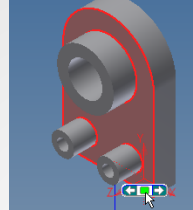
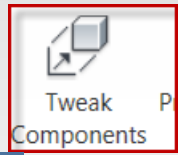
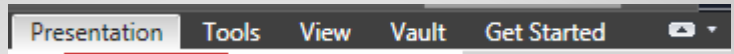
- ✓ Presentation
- ✓ Tweak Components
- ✓ Direction (z)
- ✓ Component(s)
- ✓ Drag: -3.5
- ✓ Clear

Presentation Tools View Vault Get Started



c. Third Tweak - Linear

- ✓ Presentation
- ✓ Tweak Components
- ✓ Direction (z)
- ✓ Component(s)
- ✓ Drag: 3
- ✓ Clear

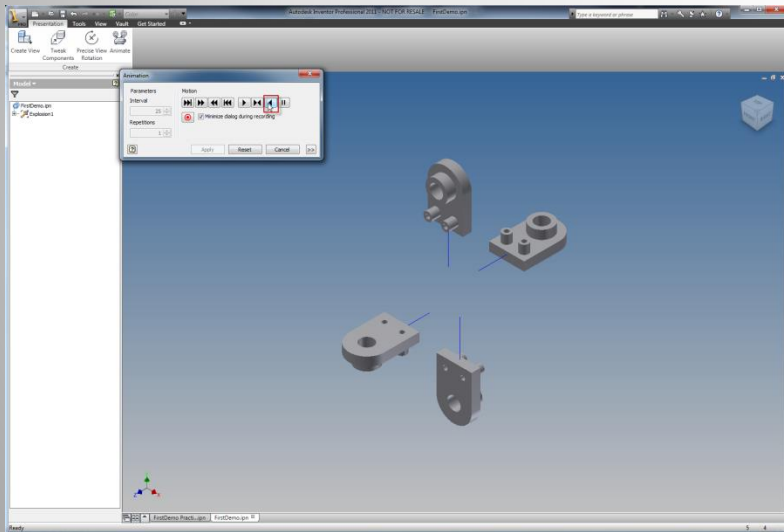
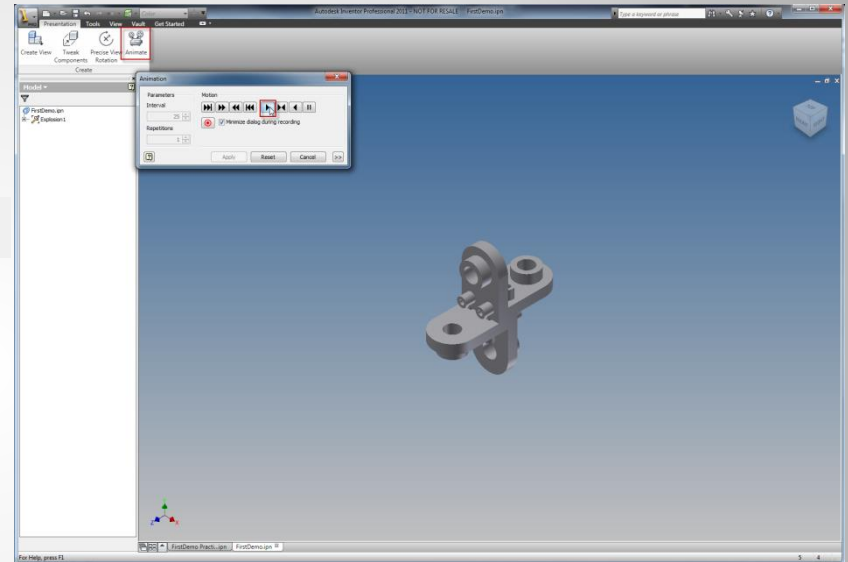
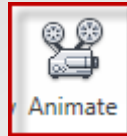


d. Fourth Tweak - Linear

3. ANIMATE

☑ Presentation

- ✓ Animate
- ✓ Play Forward
- ✓ Reverse
- ✓ Other



a. Playing the animation

Presentation

Animate

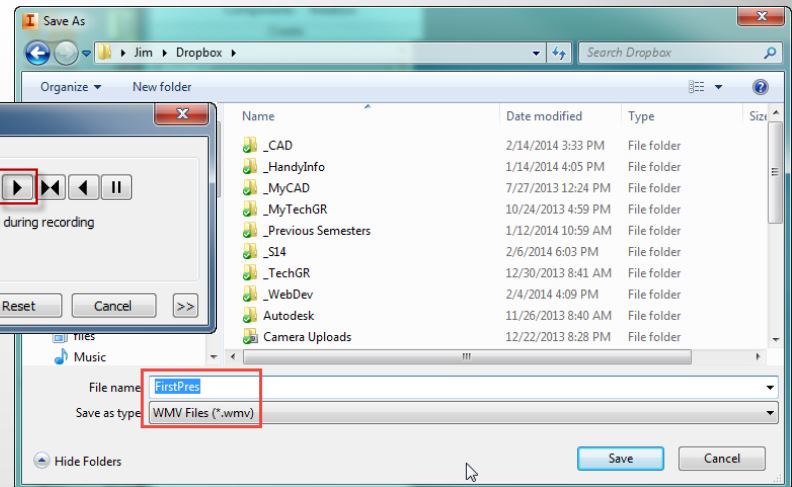
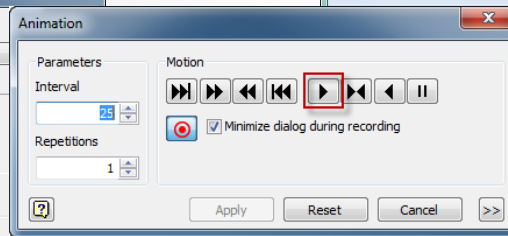
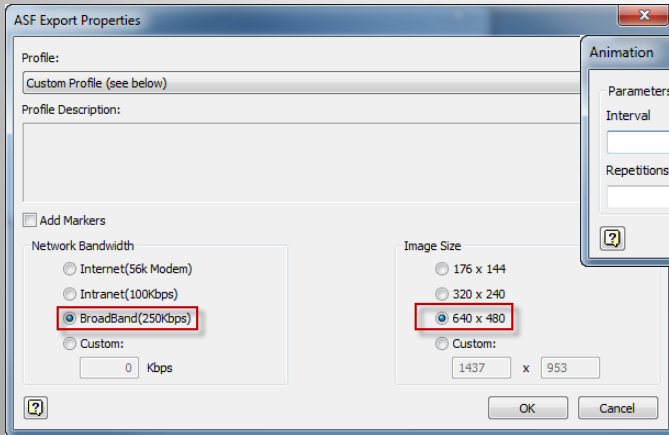
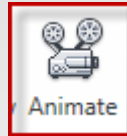
Record

File name: FirstPres.wmv

Network Bandwidth: Broadband

Image Size: 640x480

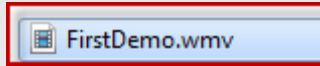
Forward



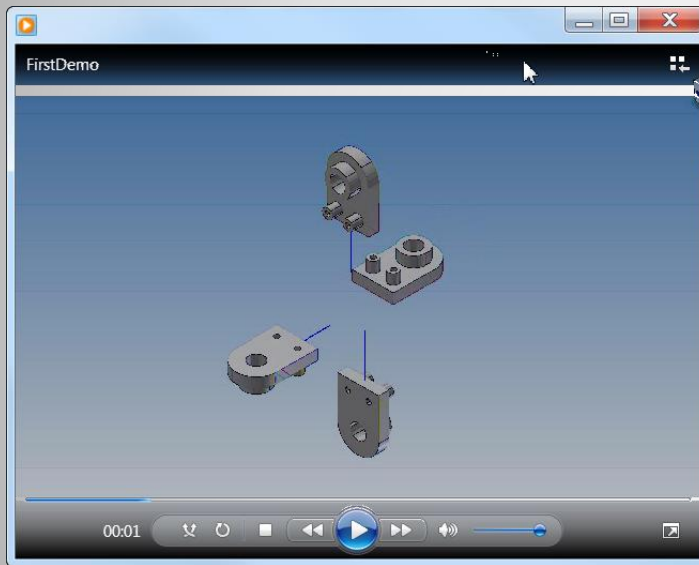
b. Recording the animation

- Windows Explorer

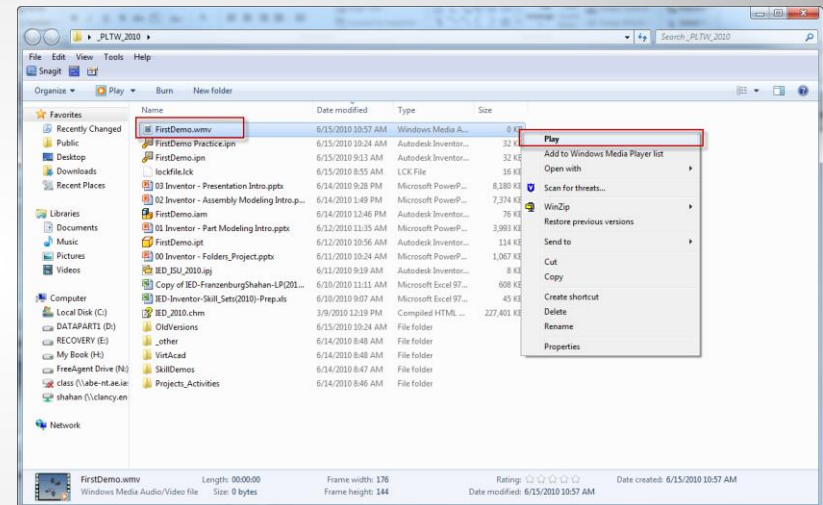
- FirstDemo.wmv



- <RMB> Play



Linked to animation



c. Viewing the animation

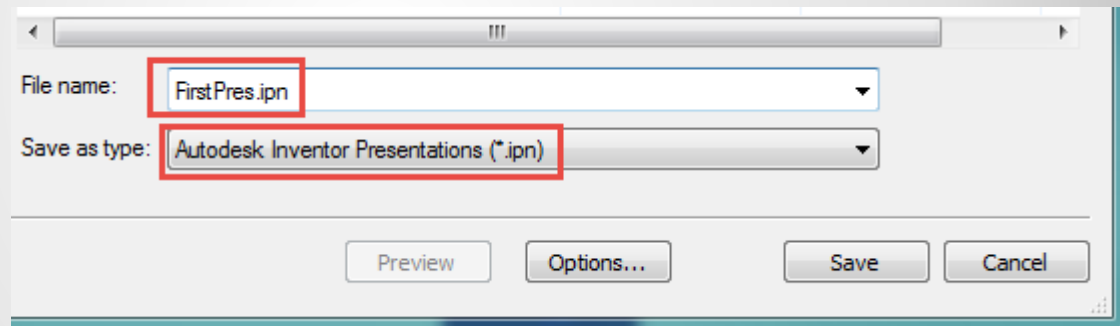
- Save



- Save in: Appropriate Folder

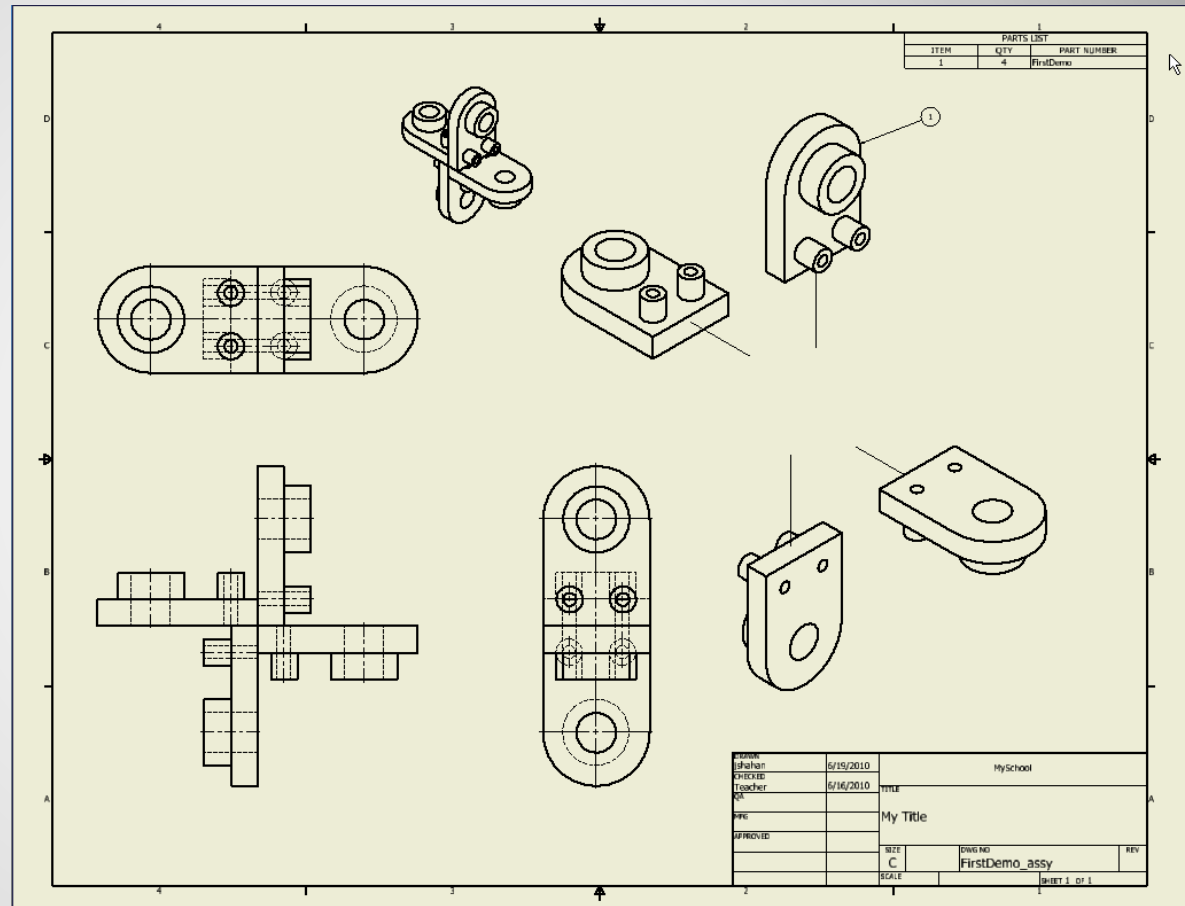
- File name: FirstPres

- Save as type: .ipn



d. Save

- Views
 - Base (x2)
 - Projected
- Anotation
 - Centers
 - Parts List
 - Balloons
- Other
 - Lines



Application: Assembly Drawing