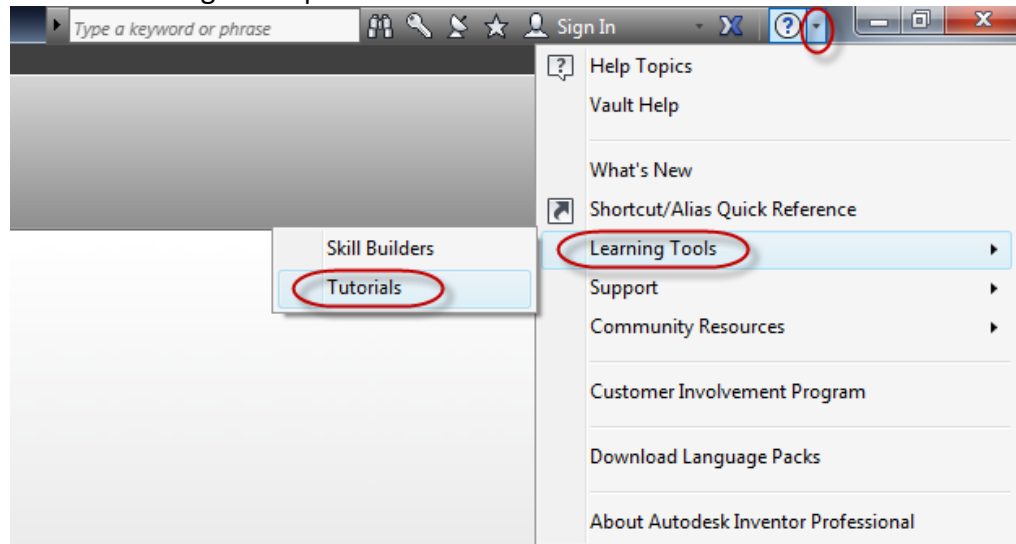
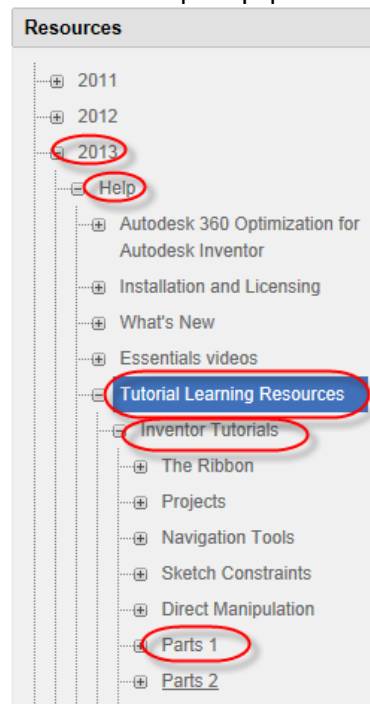


Inventor Tutorials: Parts 1 | Parts 2

1. Review: The Inventor Tutorials
 - a. Start Inventor
 - b. Select / Use the correct project: TSM 216
 - c. Select: Learning Tools | Tutorials

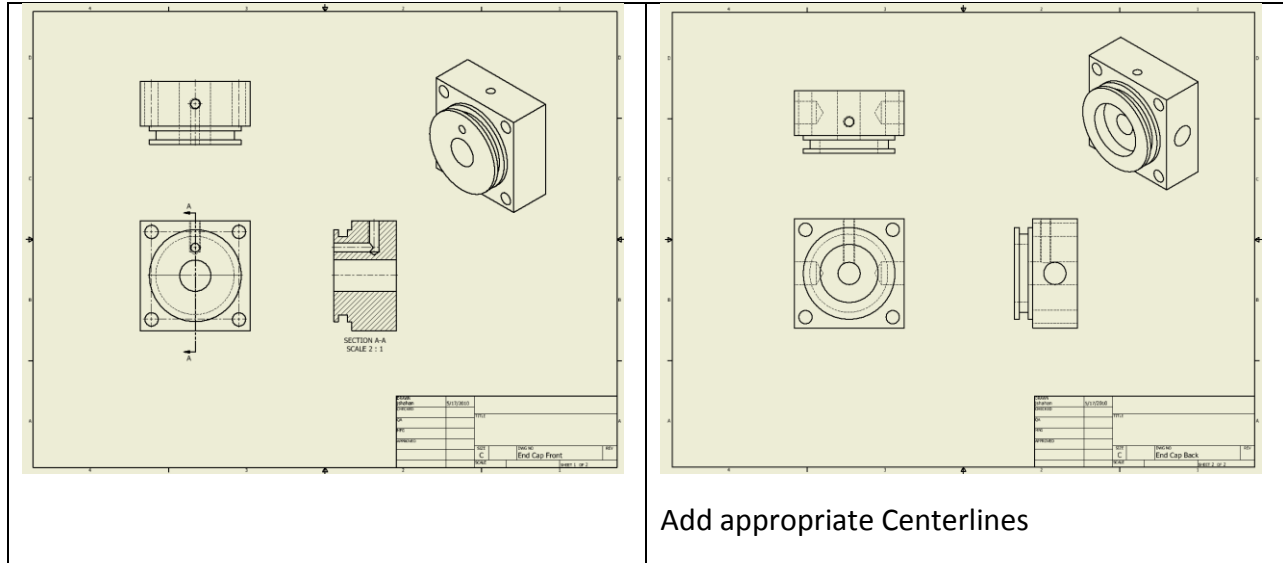


- d. Select: 2013 | Help | Tutorial Resources | InventorTutorials: Parts 1



e. Create the Part Models and Drawings

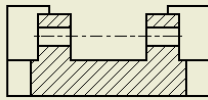
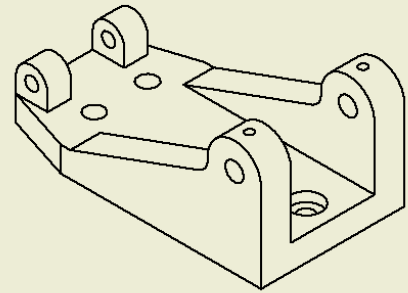
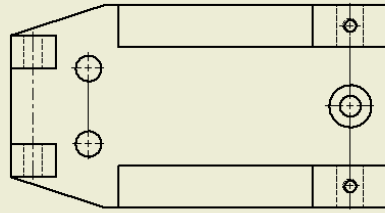
- i. Create the part models: End Cap Front, End Cap Back
- ii. Create the drawings: See below



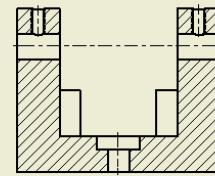
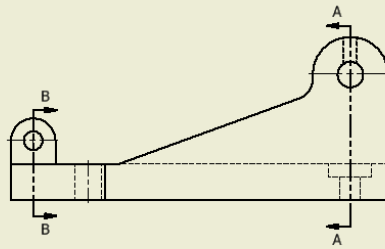
f. Tutorial: Parts 2

1. Create the part model: Cylinder Base
2. Create the part Drawing (See Below)





SECTION B-B
SCALE 1 : 1



SECTION A-A
SCALE 1 : 1

| | | | |
|----------|-----------|-------|---------------|
| DRAWN | 5/17/2010 | | |
| CHECKED | | TITLE | |
| QA | | | |
| RFG | | | |
| APPROVED | | | |
| | | SIZE | DWG NO |
| | | C | Cylinder Base |
| | | SCALE | REV |
| | | | SHEET 1 OF 2 |