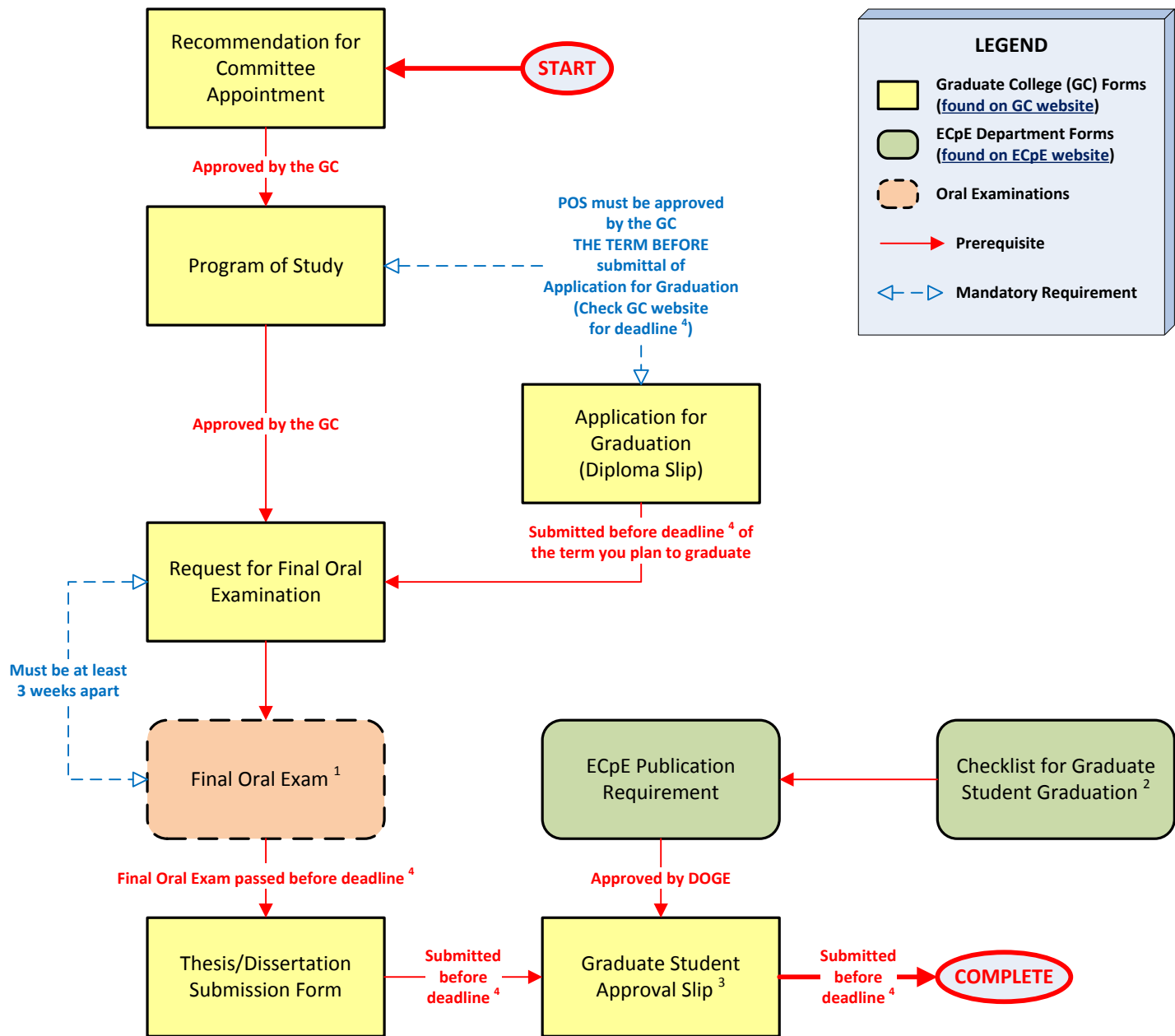


ECpE MS (Thesis Option) Flowchart (Last Revised: 09/2013)



NOTES

1. Registration for AT LEAST TWO CREDIT HOURS during the term in which the exam is taken.
2. This form is NOT available online. Please go to ECpE Student Services to pick up a hard copy.
3. This form is NOT available online. It is in the package the Graduate College sends to you.
4. All deadlines can be found on the [Graduate College website](#).

COMMENTS

- The "outside" member of the POS committee SHALL NOT be in the same academic area as the major professor.
- Time limit for courses on the POS is 7 years. Do not specify an area of specialization on the POS.
- The student OR at most one of the POS committee members (but not both) may participate the final oral exam from a distance. Request must be approved by the Graduate College before the exam.
- ECpE publication requirement for an MS degree (Thesis Option) is at least 1 journal or conference paper submission, as approved by the major professor.
- Be sure to upload the final thesis/dissertation online before deadline. ⁴